



**1.5 Million Natural Gas Connections  
Project in 11 Governorates**

**Site-Specific Environmental and  
Social Impact Assessment**

**El Hadtha/Qalubia Governorate**

**September 2016**



**EGAS**

**Egyptian Natural Gas Holding Company**

**Developed by**



**EcoConServ Environmental Solutions**



**Petrosafe**

**Petroleum Safety & Environmental Services  
Company**



## List of acronyms and abbreviations

AFD	Agence Française de Développement (French Agency for Development)
BUTAGASCO	The Egyptian Company for LPG distribution
CAPMAS	Central Agency for Public Mobilization and Statistics
CDA	Community Development Association
CO	Carbon monoxide
CRN	Customer Reference Number
CULTNAT	Center for Documentation Of Cultural and Natural Heritage
EEAA	Egyptian Environmental Affairs Agency
EGAS	Egyptian Natural Gas Holding Company
EGP	Egyptian Pound
EHDR	Egyptian Human Development Report 2010
EIA	Environmental Impact Assessment
ER	Executive Regulation
E&S	Environmental and Social
ESIA	Environmental and Social Impact Assessment
ESIAF	Environmental and Social Impact Assessment Framework
ESM	Environmental and Social Management
ESMF	Environmental and Social Management framework
ESMP	Environmental and Social Management Plan
FGD	Focus Group Discussion
GAC	governance and anticorruption
GDP	Gross Domestic Product
GIS	Global Information Systems
GoE	Government of Egypt
GPS	Global Positioning System
GRM	Grievance redress mechanisms
HDD	Horizontal Directional Drilling
HDPE	High-Density Polyethylene pipes
HH	Households
HHH	Head of the Household
hr	hour
HSE	Health Safety and Environment
IBA	Important Bird Areas
IDSC	Information and Decision Support Center
IFC	International Finance Corporation
IGE/SR	Institute of Gas Engineers/Safety Recommendations
LDCs	Local Distribution Companies
LGU	Local Governmental Unit
LPG	Liquefied Petroleum Gas
mBar	milliBar
MDG	Millennium Development Goal
MOP	Maximum operating pressure
MP	Management Plan
MTO	Material take-off
NG	Natural Gas
NGO	Non-Governmental Organizations
NO2	Nitrogen dioxide



OSH	Occupational Safety and Health
P&A	Property and Appliance Survey
PAP	Project Affected Persons
PE	Poly Ethylene
PM10	Particulate matter
PPM	Parts Per Million
PRS	Pressure Reduction Station
RAP	Resettlement Action Plan
RPF	Resettlement Policy Framework
SDO	Social Development Officer
SIA	Social Impact Assessment
SO2	Sulphur dioxide
SSIAF	Supplementary Social Impact Assessment Framework
SYB	Statistical Year Book
T.S.P	Total Suspended Particulates
Town Gas	The Egyptian Company for Natural Gas Distribution for Cities
WB	The World Bank
WHO	World Health Organization
\$	United States Dollars
€	Euros

Exchange Rate: US\$ = 8.83 EGP. as of September 2016

Exchange Rate: € = 9.89 EGP as of September 2016



## Contents

<b>LIST OF ACRONYMS AND ABBREVIATIONS</b>	<b>I</b>
<b>LIST OF TABLES</b>	<b>V</b>
<b>LIST OF FIGURES</b>	<b>VI</b>
<b>1 INTRODUCTION 1</b>	
1.1 PREAMBLE	1
1.2 PROJECT OBJECTIVES	1
1.3 ENVIRONMENTAL AND SOCIAL IMPACT ASSESSMENT (ESIA)	1
1.4 CONTRIBUTORS	2
<b>2 PROJECT DESCRIPTION 3</b>	
2.1 BACKGROUND	3
2.2 PROJECT WORK PACKAGES DURING CONSTRUCTION	4
2.3 PROJECT EXECUTION METHODOLOGY	5
2.4 ACTIVITIES OF THE OPERATION PHASE	11
<b>3 LEGISLATIVE AND REGULATORY FRAMEWORK 12</b>	
3.1 APPLICABLE ENVIRONMENTAL AND SOCIAL LEGISLATION IN EGYPT	12
3.2 WORLD BANK SAFEGUARD POLICIES	13
<b>4 ENVIRONMENTAL AND SOCIAL BASELINE 15</b>	
4.1 DESCRIPTION OF THE ENVIRONMENT	15
4.2 SOCIOECONOMIC BASELINE	25
<b>5 ENVIRONMENTAL AND SOCIAL IMPACTS 32</b>	
5.1 POSITIVE IMPACTS	32
5.2 ANTICIPATED NEGATIVE IMPACTS	33
5.3 POTENTIAL NEGATIVE IMPACTS DURING CONSTRUCTION	34
5.4 POTENTIAL NEGATIVE IMPACTS DURING OPERATION	41
5.5 WOMEN AND VULNERABLE GROUPS	42
<b>6 ANALYSIS OF ALTERNATIVES 43</b>	
6.1 NO PROJECT ALTERNATIVE	43
6.2 ENERGY ALTERNATIVES	43
6.3 INSTALLATION COSTS	43
<b>7 ENVIRONMENTAL AND SOCIAL MANAGEMENT &amp; MONITORING PLAN 43</b>	
7.1 OBJECTIVES OF THE ESM&MP	43
7.2 MANAGEMENT OF MITIGATION AND MONITORING ACTIVITIES DURING CONSTRUCTION PHASE	44
7.3 ENVIRONMENTAL AND SOCIAL MANAGEMENT MATRIX DURING CONSTRUCTION	59
7.4 ENVIRONMENTAL AND SOCIAL MONITORING MATRIX DURING CONSTRUCTION	66
7.5 MANAGEMENT OF MITIGATION AND MONITORING ACTIVITIES DURING OPERATION PHASE	68
7.6 ENVIRONMENTAL AND SOCIAL MANAGEMENT MATRIX DURING OPERATION	70
7.7 ENVIRONMENTAL AND SOCIAL MONITORING MATRIX DURING OPERATION	73
7.8 REPORTING OF MITIGATION AND MONITORING ACTIVITIES	74
7.9 INSTITUTIONAL FRAMEWORK FOR ESM&MP IMPLEMENTATION	75
<b>8 STAKEHOLDER ENGAGEMENT AND PUBLIC CONSULTATION 78</b>	
8.1 DEFINING THE STAKEHOLDER	78
8.2 CONSULTATION METHODOLOGY AND ACTIVITIES	79
8.3 SUMMARY OF CONSULTATION OUTCOMES	82
8.4 SSESIA DISCLOSURE	83



---

<b>ANNEX 1: CONTRIBUTORS TO THE ESIA</b>	<b>84</b>
<b>ANNEX 2: PROCEDURES FOR CHANCE FINDS AND ESM&amp;MP FOR PHYSICAL CULTURAL RESOURCES</b>	<b>85</b>
<b>ANNEX 3: SITE AIR MEASUREMENTS METHODOLOGY</b>	<b>88</b>
<b>ANNEX 4: IMPACT ASSESSMENT</b>	<b>89</b>
<b>ANNEX 5: COMPLAINT FORM</b>	<b>92</b>
<b>ANNEX 6: EGYPT GAS HEALTH AND SAFETY GUIDELINES</b>	<b>93</b>



## List of Tables

Table 2-1: Planned connections .....	6
Table 4-1: Location of Air and Noise measurements .....	16
Table 4-2: 8 hours average results at the school ( $\mu\text{g}/\text{m}^3$ ) .....	16
Table 4-3 Ambient Noise Levels Readings at the school.....	17
Table 4-4: National and World Bank limits for ambient noise levels .....	18
Table 4-6: %Distribution of El Hadtha population by educational status.....	26
Table 4-7: % Distribution of El Hadtha population by work status and sex .....	27
Table 4-8: % Distribution of the problems related to LPG cylinders .....	29
Table 4-9:% Distribution of El Hadtha sample by roles and responsibility related to LPG .....	30
Table 7-1 Handling of Solid Wastes during Construction Phase .....	50
Table 7-2 Wastes Common for Construction of gas pipelines.....	51
Table 7-3: Environmental and Social Management Matrix during CONSTRUCTION.....	59
Table 7-4: Environmental and Social Monitoring Matrix during CONSTRUCTION .....	66
Table 7-5: Environmental and Social Management Matrix during OPERATION.....	70
Table 7-6: Environmental and Social Monitoring Matrix during OPERATION .....	73
Table 8-1: Summary of Consultation Activities in El Hadtha .....	79
Table 8-2: Sample of the main issues raised during data collection and scoping phase in El Hadtha .....	81
Table 0-1: Management matrix for cultural sites (if encountered).....	86
Table 0-2: Monitoring matrix for cultural sites (if encountered) .....	87
Table 0-3: Standard reference methods followed for the collection of ambient air pollutants.....	88





## List of Figures

Figure 2-1: General components of the city’s distribution network.....	3
Figure 2-2: El Hadtha area relative to Shalaaqan, Qalyubeya.....	6
Figure 2-3: Project sectors in El Hadtha area .....	6
Figure 2-4: Typical backfill arrangement (Source: EGAS technical drawings).....	8
Figure 2-5: Typical layout of U-shaped concrete slab (Source: EGAS technical drawings) .....	9
Figure 4-1: El Hadtha south of El Shalaaqan in El Qanater El Khairia (delimited by the black trace.) in Qalyubia governorate.....	15
Figure 4-2: Map of El Qanater Al Khairia. El Hadtha is located in the south of El Shalaaqan .....	15
Figure 4-3: Average annual temperatures (red line) and maximum and minimum temperatures.	19
Figure 4-4: Average rainfall.....	19
Figure 4-5: Examples of urban primary streets in Al Hadtha.....	22
Figure 4-6: Example of an urban secondary street in Al Hadtha .....	23
Figure 4-7: Examples of local streets in Al Hadtha .....	23
Figure 4-8: Local streets and market (left) in Al Hadtha.....	23
Figure 4-9: Location of Abu Zaabal landfill about 25 km East of El Hadtha project area .....	24
Figure 4-10:prevalent building type.....	26
Figure 4-11:Women in front of the LPG outelt .....	26
Figure 4-13: % Distribution of El Hadtha population by work status and sex of the breadwinner .....	27
Figure 4-14: % Distribution of population by income & expenditure and sex.....	28
Figure 4-15: A woman transporting an LPG cylinder in El Hadtha.....	31
Figure 4-16:Children transporting LPG cylinders in El Hadtha.....	31
Figure 7-1 Proposed Grievance and Redress Mechanism.....	55
Figure 7-2: Egypt Gas ESMP organogram.....	75
Figure 8-1: Group discussion.....	79
Figure 8-2: Meeting in front of house .....	79
Figure 8-3: % distribution of consulted households’ sample by age category.....	80
Figure 8-4: % distribution of consulted households’ sample by occupational status .....	80



## 1 Introduction

### 1.1 Preamble

The Government of Egypt (GoE) has immediate priorities to increase household use of natural gas (NG) by connecting 1.2 million households/yr to the gas distribution network to replace the highly subsidized, largely imported Liquefied Petroleum Gas (LPG).

The total installed domestic connections until 2015 reached 7.2 million customers and 14.8 thousand commercial customers and 2.3 thousand industrial clients. That was achieved in full cooperation with the local distribution companies.

The GoE is implementing an expansion program for Domestic Natural Gas connections to an additional 1.5 Million households over the next 4 years. The project presented in this study is part of a program that involves extending the network and accompanying infrastructure to connect 1.5 million Households in 11 Governorates between 2016 and 2019 with the assistance of a World Bank Loan of up to US\$500 Million and the Agence Française de Développement (French Agency for Development) financing of up to €70 Million. The program is estimated to cost US\$850 Million.

### 1.2 Project Objectives

The proposed project represents an integral component of the National energy strategy which aims for greater use of natural gas for domestic users and reduction of government subsidies of the energy sector (LPG). The project is planned for completion within 3 years. The following results are envisaged:

- Wider NG coverage and stable household energy supply
- Reduced leakage and fire risk compared to LPG
- Reduced LPG cylinder prices due to lower demand
- Reduced hardships to the physically challenged, women, and the elderly
- Reduced costs compared to butane gas (LPG) and electricity in Egypt
- Reduced strategic dependence on imported fuel (LPG)
- Rationalization of subsidies for LPG cylinders.

### 1.3 Environmental and Social Impact Assessment (ESIA)

World Bank Environmental and Social Safeguard policies require an Environmental & Social Impact Assessment (**ESIA**) of the proposed project. In 2013 an Environmental and Social impact Assessment framework (**ESIAF**) and a Supplementary Social Impact Assessment Framework (**SSIAF**) were prepared for the 11 governorates.

This ESIA has been prepared based on the Terms of Reference prepared by EGAS and cleared by the World Bank. A joint venture between Petrosafe (Petroleum Safety & Environmental Services Company and EcoConServ Environmental Solutions was contracted in November 2015 to develop the governorate-level and site-specific ESIA's.

ESIA is undertaken to assess and propose mitigations for environmental and social impacts of distribution networks serving the various project areas. Impacts of NG exploration, extraction,





refining, transmission, off-takes from the national network to the project areas, pressure and reduction stations are outside the scope of the ESIA.

**The objectives of the ESIA include:**

- Describing project components and activities of relevance to the environmental and social impacts assessments
- Identifying and addressing relevant national and international legal requirements and guidelines
- Describing baseline environmental and social conditions
- Presenting project alternatives and no project alternative
- Assessing potential site-specific environmental and social impacts of the project
- Developing environmental & social management and monitoring plans in compliance with the relevant environmental laws
- Documenting and addressing environmental and social concerns raised by stakeholders and the Public in consultation events and activities

As the project involves components in various areas within the 11 governorates, the parties to the project agreed that site-specific Environmental and Social Impact Assessments (SSESIAs) for each of the project sub-areas within the governorate will be prepared. Guided by the 2013 ESIAF and SSIAF, this is the site specific ESIA for the connections network planned for El Hadtha Area in Qalyubeya Governorate. The project in El Hadtha encompasses 10,000 household connections. The 10,000 households are to be connected over 3 years: 1,000 in year 1, 5,000 in year 2, and 4,000 in year 3.

**The local distribution company responsible for project implementation in El Hadtha is Egypt Gas or (شركة غاز مصر).**

No major environmental or social risks could be foreseen to prevent reaching the targeted customer over the proposed 3-year timeframe. The extensive experience gained, by EGAS and affiliates, through implementation of the previous WB- and GoE-funded Natural Gas Connection project in Greater Cairo (and all over Egypt) plays a critical role in minimizing environmental and social risks and maximizing public ownership and acceptance.

#### **1.4 Contributors**

The ESIA has been prepared by a Joint Venture between Petrosafe (Petroleum Safety & Environmental Services Company and EcoConServ Environmental Solutions (Cairo, Egypt) with collaboration, and facilitation from EGAS, Egypt Gas, Regas and Town Gas HSE and Engineering Departments. The names of the Petrosafe and EcoConServ experts who have participated in the preparation of the ESIA study are listed in Annex 1 of this report.

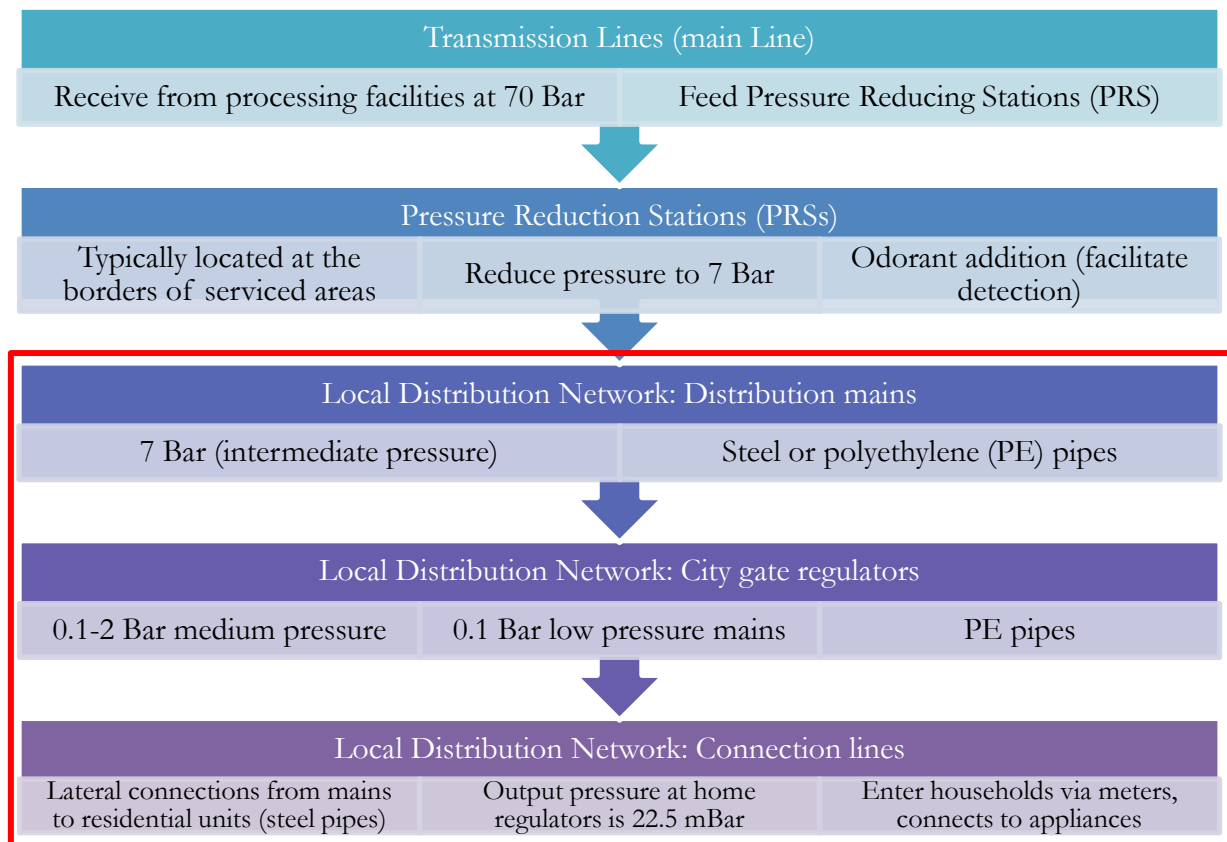


## 2 Project Description

### 2.1 Background

Natural Gas (NG) is processed and injected into the high pressure lines of the national Grid (70 Bar) for transmission. Upon branching from the main lines to regional distribution networks, the pressure of the NG is lowered to 7 Bar at the Pressure Reduction Stations (PRS). An odorant is added to the NG at PRSs feeding distribution networks to residential areas<sup>1</sup> in order to facilitate detection. Regulators are then used to further lower the pressure to 100 mbar in the local networks, before finally lowering the pressure to 20 mbar for domestic use within the households. In addition to excavation and pipe laying, key activities of the construction phase also include installation of pipes on buildings, internal connections in households, and conversion of appliance nozzles to accommodate the switch from LPG to NG.

Project components planned for **El Hadtha area** are enclosed in the red box in the figure below:



**Figure 2-1: General components of the distribution network in this area**

<sup>1</sup> Because natural gas is odorless, odorants facilitate leak detection for inhabitants of residential areas.



---

## **2.2 Project Work Packages during Construction**

---

### **2.2.1 Main feeding line/network “7 bar system – PE 100”**

A gas distribution piping system that operates at a pressure higher than the standard service pressure delivered to the customer. In such a system, a service regulator is required to control the pressure delivered to the customer.

Main feeding lines are mainly constructed from polyethylene pipes with maximum operating pressure (MOP) below 7 bar.

### **2.2.2 Distributions network “Regulators, PE80 Networks”**

A gas distribution piping system in which the gas pressure in the mains and service lines is substantially the same as that delivered to the customer’s Meters. In such a system, a service regulator is not required on the individual service lines.

Distribution networks are mainly constructed from polyethylene pipes with MOP below 100 millibar.

### **2.2.3 Installations (Steel Pipes)**

A gas distribution piping system consists of steel pipes which are connected from an individual service line to vertical service pipe in a multistory dwelling which may have laterals connected at appropriate floor levels; in addition to service pipe connected to a riser and supplying gas to a meter and gas appliances on one floor of a building.

Internal Installation consists of a pipe connecting the pressure reducing regulator/district Governor and meter Outlet (MOP 25 millibar) to appliances inside the customer’s premises.

### **2.2.4 Conversions**

Conversions involve increasing the diameter of the nozzle of the burner of an appliance to work with natural gas as a fuel gas rather LPG or others.



---

## 2.3 Project Execution Methodology

---

### 2.3.1 Project area selection criteria

Preliminary project planning has applied social, economic, safety, and technical criteria to identify sub-areas (districts and villages that might be increased subject to availability of resources and compliance with technical, economic, and social criteria) as targets for connecting the customers (households). The project shall introduce the service in new areas, which have not been connected before, and shall further extend the network in areas which are partially covered.

A preliminary estimate was generated through a general survey (outlined below), followed by a Property & Appliance (P&A) survey. The outcome of the P&A survey is a detailed listing of individual households to be connected after passing safety and technical evaluations. The detailed listing is then used to finalize pipeline sizing and routing.

### 2.3.2 General survey

- Data collection on potential households to be connected from all relevant authorities
- Field visits to record road and building conditions.
- Approximation of the number of customers not meeting safety and technical criteria.
- Identifying availability of utilities in the area and their conditions (Electricity, Water, telephone lines, and sanitation network) through data and maps from the relevant authorities.
- Identifying the location of the nearest PRS or gas networks, if available.

### 2.3.3 Property & Appliance (P &A) survey

- Obtain the latest aerial maps of the project areas from the Egyptian Survey Authority
- Identifying Global Positioning System (GPS) coordinates of the sites
- Locating each road and building and inserting them on the corresponding map
- GPS team develops a survey map to be used by the P&A survey team to generate a unique customer reference number (C.R.N) based on building, block, and sector
- The final (C.R.N) will be associated to customer name, address, appliances, and data.
- An isometric drawing for each building, location of service, and riser routes is created, reviewed by the surveyors, and delivered to the Installations department
- Data is entered into a central database and G.I.S system for review by a design team
- Design team finalizes pipe sizing, type, regulator capacity & locations, routing, and number of appliances to be converted

### 2.3.4 Criteria for selection of structures eligible for connections

- Areas with pre-existing utilities especially underground (electricity, water, sewerage, telecommunication)
- Structures in residential areas cannot be made from clay or wood
- Structures must comply with British Standards and Egyptian Building Codes
- Residential areas must be in proximity to the gas network

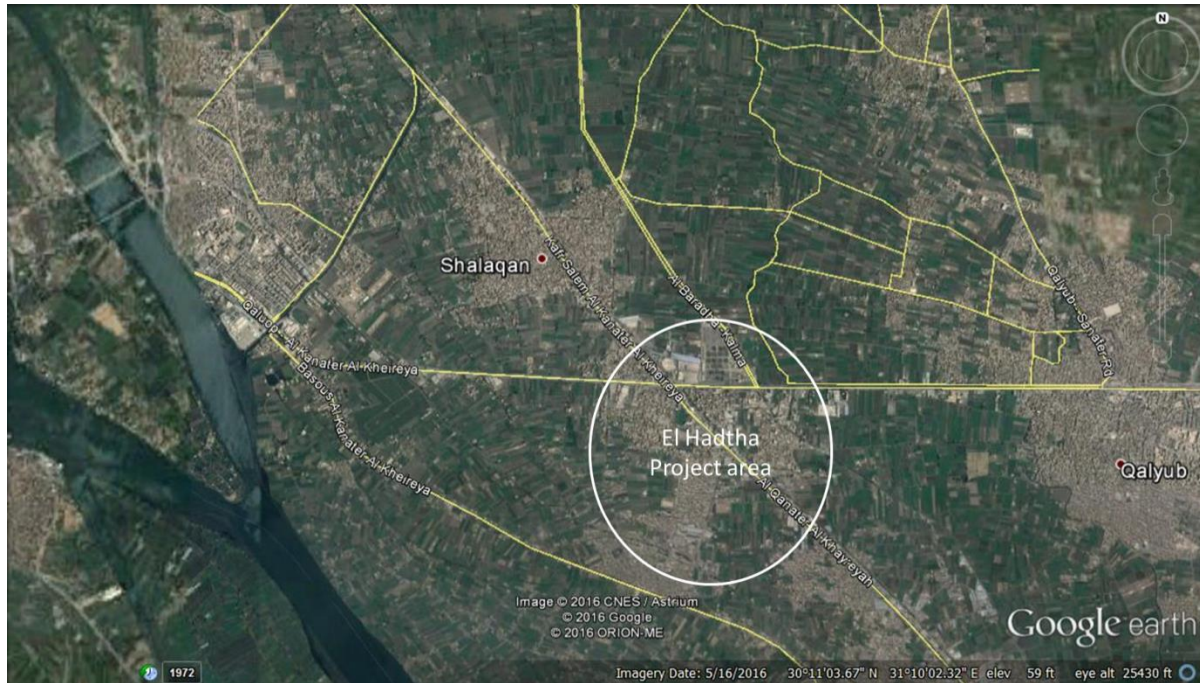




Based on the above, potential connections in El Hadtha area are presented below:

**Table 2-1: Planned connections**

Governorate	First year 2016/2017	Second year 2017/2018	Third year 2018/2019	Total (Thousand units)
El Hadtha	1	5	4	10



**Figure 2-2: El Hadtha area relative to Shalqaq, Qalyubeya**



**Figure 2-3: Project sectors in El Hadtha area**



### **2.3.5 Design and material take-off (MTO) including procurement**

Once the final number and location of project components and households is finalized, a final design of the distribution pipelines is utilized to estimate the materials needed to implement the project. Procurement of the materials includes local and international components. Local purchases typically include PE piping for the distribution networks. The main international purchases may include critical components, regulators, and metering stations

### **2.3.6 Construction works of Main feeding line/network “7bar system – PE100”**

The distribution system shall consist of 7-Bar mains extending through city gate regulators, which in turn feeds low pressure networks via district regulators.

Distribution mains are typically Polyethylene (PE) pipes connected to regulators. Regulators are fed by 7-Bar piping which is orange in color (referred to as PE100) with diameters between 16mm to 355mm according to GIS PL2-8.

#### ***Excavation and pipe laying:***

In general, the least expensive and most commonly used excavation technique is the Open cut technique. Alternatively, borings may be excavated using hydraulic drive, and finally Horizontal Directional Drilling (HDD) technique. HDD is only utilized in the case of railway crossings, waterways, and major streets where traffic cannot be interrupted. In the case of HDD under railway crossings steel or reinforced concrete sleeves will be installed to further protect the piping from fatigue. It should be noted that intersections with waterways of the Nile or its major branches are not anticipated in this project.

#### ***Site preparation and excavation:***

Prior to excavation works, pipeline routes shall be identified and marked in the field. Excavation works start by removing the asphalt layer using either a mechanical trencher or a jack hammer. The mechanical trencher also removes broken asphalt and the base stone layer. In case the jack hammer is used, road layers are then removed by excavator.

The road base soil, underneath asphalt and stones, is then excavated either by a backhoe excavator or by manual excavation. The advantage of manual excavation is that it reduces the risks of breaking water, sewerage, electric or telecommunication lines which are unmapped. Typically the trench for PE pipes is 0.4-0.6 meter wide, and about 1.5 meter deep, depending on pipe diameter. For steel pipes the trench width is 0.6-0.8 meters with the same depth, also depending on diameter.

Excavated soils, broken asphalt and other waste materials during excavation are loaded onto trucks, for transfer to disposal sites. Because of limited space on most streets, loading waste trucks shall be done upon excavation in order to avoid stockpiling waste.

In some cases, where groundwater table is shallow, the trench should be dewatered before pipe laying. Dewatering pumps typically discharge into a drain or sewer manhole, according to arrangements with local authorities. To conserve water, if dewatered groundwater is free of perceivable pollution, it will be- to the extent possible- used on- or around the work site or discharged into the nearest canal to be used for irrigation.





**Pipe laying:**

During the excavation works, welding works may take place above-ground. Once the trench is excavated, the pipe stretch shall be laid down.

Welding may involve a built-in coil electrical fusion weld (fittings with heating coils installed inside) or butt welds (hot plate softening the tips of the PE pipes before joining). In both cases, adequate electrical units are needed onsite (diesel generators, cables).

**Backfill and road repair:**

Natural gas PE pipes should be surrounded by sand in order to absorb loads from the road. After laying and welding works, the trench is then filled with sand either by a front loader or manually.

The sand should be effectively compacted in the trench in order to avoid road settlements, and subsequent cracks. A yellow warning tape marked “Natural Gas” is placed on top of the sand layer.

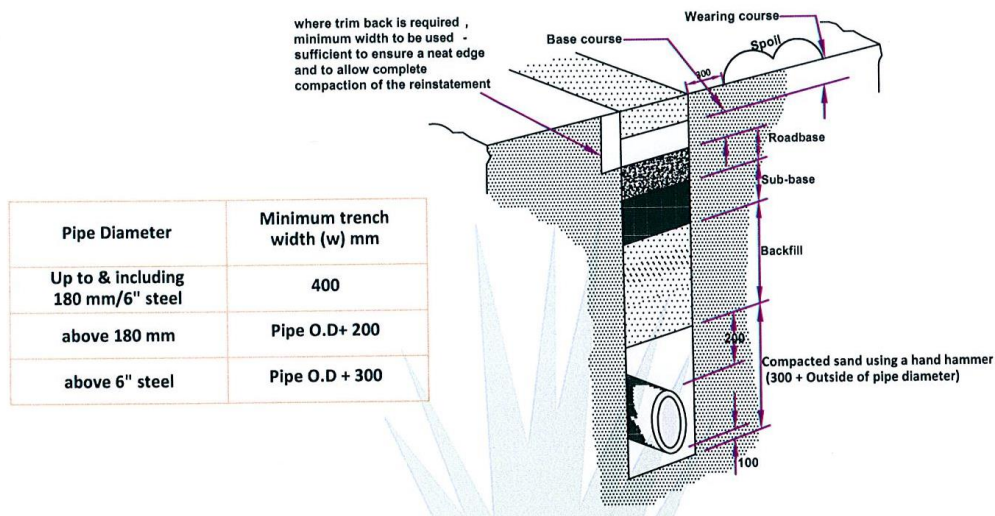


Figure 2-4: Typical backfill arrangement (Source: EGAS technical drawings)

In some cases, an inverted U-shaped reinforced concrete slab is constructed around the pipeline after laying in order to improve shock resistance.

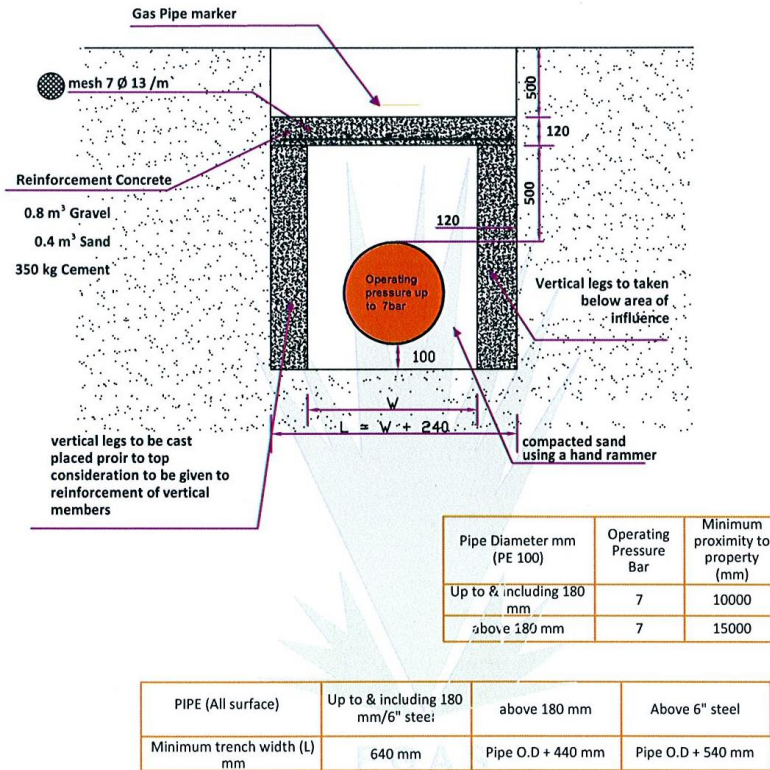


Figure 2-5: Typical layout of U-shaped concrete slab (Source: EGAS technical drawings)

### Leakage testing:

Following construction activities, the piping should be tested to locate possible leaks using either hydrostatic testing or pneumatic air-gas testing. In the former, the pipe is filled with water and then pressurized to the desired level, along with pressure testing at different locations to detect leaks, then water is drained. In the second process, air, or an inert gas, is used instead of water. In both cases, pressure is increased to 1.5x the operating pressure. Pressure drop indicates leakage.

Hydrostatic testing is more complicated than the pneumatic, as it requires highly efficient water drainage. This drainage takes place by the "pigging process", which includes forcing an object, the "pig", through the pipe by liquid or air pressure to totally drain the line before NG is fed. In the case of pneumatic testing, Nitrogen gas purge to remove air after the test.

In order to prevent deformation, dislocation, and rupture of the pipes, leakage testing through pressurization must be performed AFTER backfilling the excavation under (10 cm), around (10 cm), and above the pipes (20 cm, at least).

### 2.3.7 Construction works of distribution network “regulators, PE80 networks”:

The distribution system shall consist of 100 mbar mains extending from the city gate regulators through, Distribution networks are typically Polyethylene pipes connected to regulators. Regulators are feed by 100 mbar piping which is yellow in color (referred to as PE80) with diameters between 16mm to 250mm according to GIS PL2-2.



### 2.3.8 Construction works of household installation

After testing the piping for leakage, connections to the buildings commence. The connection starts from the main line (PE) and crosses the road to the buildings on both sides. At the edge of the building, a riser (steel) feeds different laterals which ends at the customer gas meter then to different appliances. Traffic may be affected by the connection works due to obstructions by scaffolding structures. The underground portion of the riser is sleeve-protected, while above-ground pipes are painted. Risers and laterals are fixed on walls by steel clips. This will involve drilling the walls to attach the necessary bolts and rivets. The laterals enter the household through the wall. Connections are tested for leakage by increasing pressure to 2Bar and monitoring pressure drop.

- Connections work will connect the distribution network to the households.
- Gas will be feed into the property at 100 mbar maximum, through risers and laterals for flats and an external meter box service termination for singly occupied premises.
- Sizes of risers depend on the number of dwellings in the block of flats but laterals will be normally 1 inch or 3/4 inch.
- Gas meters will be installed with a suitable regulator (governor) at internal pressures of 20 mbar.
- Internal piping inside the household will be steel pipes of 1 inch, 3/4 inch and 1/2 inch diameter and will generally supply a cooker and a water heater. Connections from steel pipes to appliances are typically flexible rubber tubing in the case of stoves and copper tubing for water heaters

### 2.3.9 Conversion of home appliances

Conversion of home appliances shall be carried out on 2 appliances (stove and water heater). The majority of appliances will be converted by drilling out existing injector nozzles to accommodate the targeted gas flow. Burner drilling is necessary to increase the flow of low-pressure NG in order to maintain the calorific value that was previously available from high-pressure LPG. Typically, injector nozzles are drilled to become 1.25 to 1.5 times larger in diameter.

The installation contract between the household owner and the implementing company includes the cost of converting 2 appliances. Conversion involves increasing the diameter of the gas injectors of the stove and water heater to accommodate the difference in operating pressures and calorific value of natural gas in comparison with LPG. Conversion works are practiced at the client's flat, by changing the injectors' properties of the appliance. Typical drill bit sizes used for conversions are either 35 or 70mm.

Conversion also involves flue gas outlet/stack installation for bathroom heaters. The stack must lead to external/ambient atmosphere outside the HH. In order to allow the installation of the conversion of the heater and installation of the stack, the bathroom volume must exceed 5.6 cubic meters. Installation of the stack may require scaffolding and breaking of the wall or ceiling.

### 2.3.10 Hotline

During construction activities, a 24-7 Hotline (**129**) is available for customers and the public to report leaks, damage, emergencies, and/or incidents related to gas connections, components,



infrastructure, and activities (inside or outside households) and to request repairs/emergency response/assistance.

This includes possible damage to other underground utility lines (water, wastewater, electricity, phone, Internet) and to buildings and physical structures or cultural sites during excavation/construction activities.

It also includes reporting issues resulting from construction activities such as excessive/prolonged noise, vibration, waste, traffic, accessibility, visual, and other community health and safety impacts.

---

## **2.4 Activities of the operation phase**

### **2.4.1 Operation of the network**

The operation of the system is undertaken by LDCs. Normal operation will include routine audits on pressures and condition of the network. Normal maintenance and monitoring works for the network include:

- Monitoring valves at selected points on the pipeline. Gas leaks are routinely monitored using gas detection sensors;

In case of a leak detection, or damage to part of the network, the damaged pipe is replaced. The following procedures are usually followed:

- Stopping leaking line by valves when available or by squeezing the lines before and after the damaged part.
- Excavating above the effected part (in case of distribution main or underground line)
- Venting the line
- Removing affected pipe, replacing effecting part and welding it with the two ends, filling and road repair

### **2.4.2 Repairs in households**

Repairs in residential units include appliance adjustments or piping/metering replacement.

### **2.4.3 Hotline**

A 24-7 Hotline (**129**) is available for customers and the public to report leaks, damage, emergencies, and/or incidents related to gas connections, components, infrastructure, and activities (inside or outside households) and to request repairs/emergency response/assistance.



## 3 Legislative and Regulatory Framework

### 3.1 Applicable Environmental and Social Legislation in Egypt

- Law 217/1980 for Natural Gas
- Law 4 for Year 1994 for the environmental protection , amended by Law 9/2009 and law 105 for the year 2015
  - Executive Regulation(ER) No 338 for Year 1995 and the amended regulation No 1741 for Year 2005, amended with ministerial decree No 1095/2011, ministerial decree No 710/2012, ministerial decree No 964/2015, and ministerial decree No 26/2016
- Law 38/1967 for General Cleanliness
- Law 93/1962 for Wastewater
- Law 117/1983 for Protection of Antiquities
- Traffic planning and diversions
  - Traffic Law 66/1973, amended by Law 121/2008 traffic planning during
  - Law 140/1956 on the utilization and blockage of public roads
  - Law 84/1968 concerning public roads
- Work environment and operational health and safety
  - Articles 43 – 45 of Law 4/1994, air quality, noise, heat stress, and worker protection
  - Law 12/2003 on Labor and Workforce Safety
  - Book V on Occupational Safety and Health (OSH)
  - Minister of Labor Decree 48/1967.
  - Minister of Labor Decree 55/1983.
  - Minister of Industry Decree 91/1985
  - Minister of Labor Decree 116/1991.
- International Plant Protection Convention (Rome 1951)
- African convention on the conservation of nature and natural resources (Algeria 1968)
- UNESCO Convention for the protection of world cultural and natural heritage (Paris, 16 November 1972)
- Basel Convention on the control of trans-boundary movements of hazardous wastes and their disposal (1989)
- United Nations convention on climate change (New York 1992).
- United Nations Convention on climate change and Kyoto Protocol (Kyoto 1997)



---

## 3.2 World Bank Safeguard Policies

---

Three policies are triggered for the project as a whole: Environmental Assessment (OP/BP 4.01), Physical Cultural Resources (OP/BP 4.11), and Involuntary Resettlement (OP/BP 4.12).

However, OP/BP 4.12 will not be applicable to El Hadtha since no land acquisition or resettlement is anticipated. Particularly, as the network will pass through the main urban streets and side roads without causing any damage to private assets or lands. It is not envisaged that the project will result in any physical or economic dislocation of people in **El Hadtha** since there will be no new PRSs or expansion of existing PRSs.. The gas network will not pass through any agriculture lands or damage any assets. Therefore, no safeguards instruments for OP 4.12 will be triggered for this specific area.

### 3.2.1 OP 4.01 – Environmental Assessment

According to the World Bank Operational Policy OP 4.01, the Natural Gas Connection Project is classified among Category A projects. Projects under this Category are likely to have significant adverse environmental impacts that are sensitive<sup>2</sup>, diverse, or unprecedented.

Likely environmental impacts shall be analyzed and mitigation measures proposed for expected negative impacts in an Environmental Management/Monitoring Plan.

### 3.2.2 OP 4.11 – Physical Cultural Resources

Project areas may include sites, buildings and monuments that fall under the definition of Physical Cultural Resources<sup>3</sup>. As the project involves excavations in many locations, which may be near sites of cultural value, there has been specific attention in this study to identify the locations of such sites, and to develop mitigation measures for controlling the effects on such sites. These mitigation measures are also reflected in the Environmental Management and Monitoring Plan.

In addition to the above mentioned safeguards policies, the Directive and Procedure on Access to Information<sup>4</sup> will be followed by the Project.

### 3.2.3 World Bank Group General Environmental, Health, and Safety Guidelines & WBG Environmental, Health and Safety Guidelines for Gas Distribution Systems

Gaps between requirements outlined by WBG guidelines and actions detailed by the ESIA and the Egypt Gas Health& Safety Guideline (Annex 6) have been analyzed. There are no significant differences between the requirements outlined by the WBG EHS GUIDELINE on GAS DISTRIBUTION SYSTEMS and the management and monitoring actions outlined by the ESIA. Egypt Gas H&S guidelines are currently being updated to further align them with WBG guidelines on Gas Distribution Systems.

---

<sup>2</sup> A potential impact is considered “sensitive” if it may be irreversible (e.g., lead to loss of a major natural habitat) or raise issues covered by OP 4.10, *Indigenous Peoples*; OP 4.04, *Natural Habitats*; OP 4.11, *Physical Cultural Resources*; or OP 4.12, *Involuntary Resettlement*.

<sup>3</sup> Physical Cultural Resources are defined as movable or immovable objects, sites, structures, groups of structures, and natural features, and landscapes that have archeological, paleontological, historical, architectural, religious, aesthetic, or other cultural significance.

<sup>4</sup> <https://policies.worldbank.org/sites/ppf3/PPFDocuments/Forms/DispPage.aspx?docid=3694>







## 4 Environmental and Social Baseline

### 4.1 Description of the Environment

El Hadtha is in the south of El Shalaqan, a residential area part of El Qanater El Khairia Markaz of Qalyubeya Governorate in Egypt.

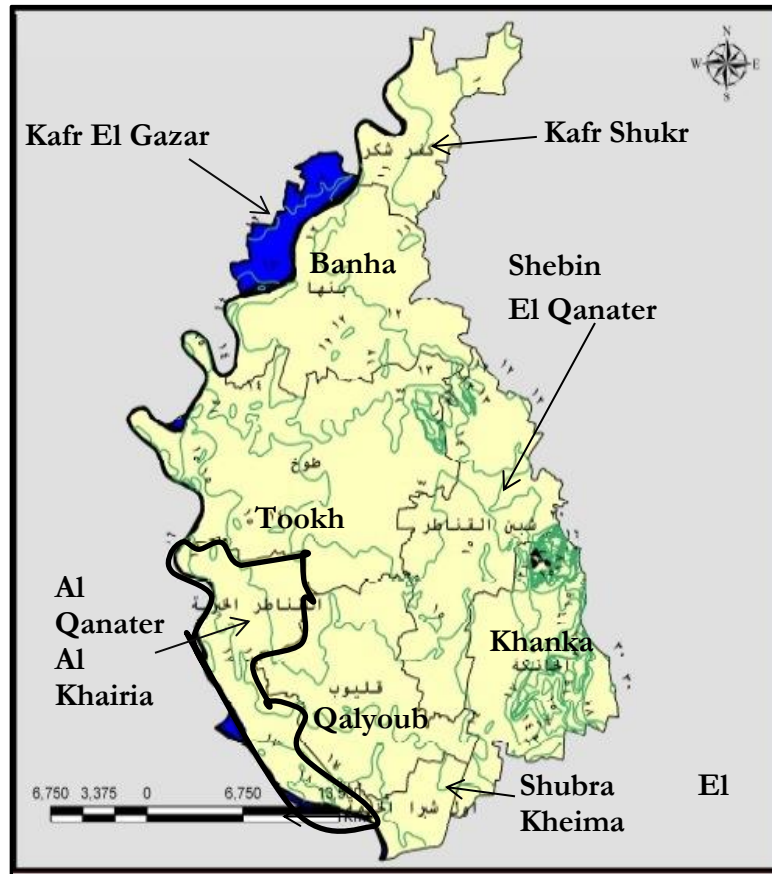


Figure 4-1: El Hadtha south of El Shalaqan in El Qanater El Khairia (delimited by the black trace.) in Qalubia governorate.



Figure 4-2: Map of El Qanater Al Khairia. El Hadtha is located in the south of El Shalaqan



#### 4.1.1 Climatology and Air Quality

##### *Site Specific Ambient Air Quality*

8-hour average measurements were conducted for pollutants of primary concerns, namely, carbon monoxide (CO), nitrogen dioxide (NO<sub>2</sub>), sulfur dioxide (SO<sub>2</sub>), Total Suspended Particulates (T.S.P) and particulate matter (PM<sub>10</sub>).

**Table 4-1: Location of Air and Noise measurements**

Location	
El Hadtha Primary School	30°10'51.09"N 31°10'19.64"E

The methodology for site selection and instrumentation are detailed in Annex 3.

#### Results

The following tables present the results for ambient air quality measurements conducted at the monitoring location. Daily average results are shown in the following table for all the measured parameters.

**Table 4-2: 8 hours average results at the school (µg/m<sup>3</sup>)**

Time	NO	NO <sub>2</sub>	NO <sub>x</sub>	SO <sub>2</sub>	CO	PM <sub>10</sub>	T.S.P
10:AM	17.4	11.5	28.6	8.9	1.7	117.9	138.95
11:00	13	19.1	32	8.5	1.7		
12:00	10.2	14	24.1	8.5	1.7		
13:00	8.5	12.1	20.5	8.2	1.6		
14:00	7.4	13	20.2	8.2	1.6		
15:00	6.1	10.5	16.8	8.4	1.7		
16:00	6.2	10.7	16.5	8.7	1.7		
17:00	6.1	10	16.1	9.5	1.6		
Limits							
National (24 hrs)	150	150	150	150	10 (mg/m <sup>3</sup> , 8 hrs)	150	230
WB (24 hrs)	-	-	200 (1 hr)	125	N/A	150	230

The concentrations of measured air pollutants are below national and WB guidelines. All the measurements for the gaseous pollutants were complying with the maximum allowable limits according to law 4/1994 for Environment protection and its amendments by law No.9/2009 and the executive regulation issued in 1995 and its amendments no. 710 in 2012 and 964 in April 2015”.



Construction equipment and machinery are certified, i.e., exhaust is below permissible levels. Ambient concentrations of gaseous pollutants, NO<sub>x</sub>, SO<sub>x</sub> and CO are unlikely to surpass permissible levels due to operation of construction equipment. Management and mitigation plans for ambient air pollution are further addressed in chapters 5 and 7.

During the construction phase, excavation, backfill, and street rehabilitation activities will likely cause dust levels to surpass permissible levels. That said, excavation and rehabilitation are done on the same work day. Therefore, the duration of permissible levels being surpassed will be intermittent for the duration of the work day i.e., 8-10 hours. Management and mitigation plans for dust concentration beyond permissible levels are further addressed in chapters 5 and 7.

#### 4.1.2 Site specific noise measurements

Noise level measurements were conducted in the same location of the ambient air quality measurements. The duration of the measurements is 8 hours with one hour averaging intervals.

#### Methodology

Instrumentation for noise levels measurements

Ambient noise levels were measured using two B & K 2238 Mediator, Integrating Sound Level Meters, Type I (precision grade), compliant with IEC 1672 Class 1 standard and a B & K 4198 Outdoor Weatherproof Microphone Kit.

#### Results

The table below presents the results of ambient noise measurements and their corresponding national and international permissible limits.

**Table 4-3 Ambient Noise Levels Readings at the school**

Time	Sound Level Equivalent & Percentile Recordings in dBA for 24 Hours					
	LAeq	LA10	LA50	LA90	LA95	LCpeak
10:00	53.82	50.52	46.05	39.93	37.27	116.97
11:00	57.96	49.06	34.62	28.4	27.83	121.52
12:00	53.12	56.87	47.47	39.7	37.8	104.96
13:00	54.5	57.38	49	41.11	39.06	105.77
14:00	57.9	52.54	41.9	36.13	34.77	93.7
15:00	51.12	54.52	42.65	35.86	34.17	105.57
16:00	57.89	60.94	53.44	45.95	43.89	104.93
17:00	54.5	58.67	49.75	38.61	36.17	99.24



**Table 4-4: National and World Bank limits for ambient noise levels**

Noise	Egyptian Law 4 Requirements			WB Requirements		
	TYPE OF AREA	Permissible noise intensity decibel		Receptor	One hour $L_{Aeq}$ (dBA)	
		DAY 7 a.m. to 10 p.m.	NIGHT 10 p.m. to 7 a.m.		Day 07:00– 22:00	Night 22:00 - 07:00
	Sensitive Areas (Schools-hospitals- rural areas)	50	40	Residential; Institutional; educational	55	45
	Residential with limited traffic	55	45	Industrial; commercial	70	70
	Urban residential areas with commercial activities	60	50			
	Residential adjacent to roads less than 12m wide	65	55			
	Residential adjacent to roads 12m wide or more, or light industrial areas.	70	60			
	Industrial areas (heavy industries)	70	70			

Typically due to noise from passing traffic on the road near the measurement locations, Baseline ambient noise levels are marginally higher than the national (Sensitive Area: School for low-pressure network connections) & World Bank permissible limits for residential, educational, and institutional receptors.

Furthermore, excavation and construction activities may cause noise levels to further surpass permissible levels at the site.

Overall, the duration of permissible levels being further surpassed during excavation and construction activities will be intermittent for the duration of the work day i.e., 8-10 hours. Management and mitigation plans for noise levels beyond permissible levels are further addressed in chapters 5 and 7.

### 4.1.3 Climate

#### *Temperature*

The average annual temperature is 21.5 °C in El Shalaqan, which includes El Hadtha. The warmest month of the year is August, with an average temperature of 28.0°C. January has the lowest average temperature of the year at 13.4 °C.

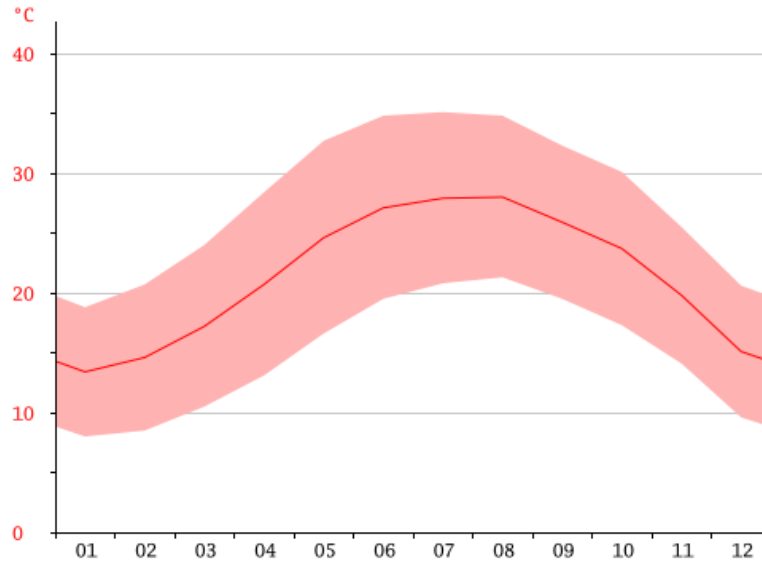


Figure 4-3: Average annual temperatures (red line) and maximum and minimum temperatures.

### Rainfall

The average annual rainfall is 24 mm. The bar chart in the figure below shows the average annual precipitation. January is represented by 01 etc.

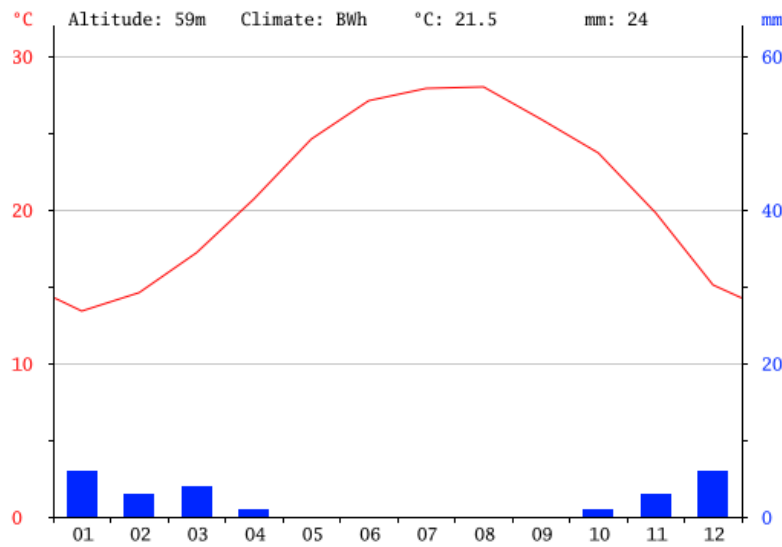


Figure 4-4: Average rainfall

### 4.1.4 Geology

#### Geomorphology

The lithostratigraphy of El Shalaqan, which includes El Hadtha, consists of Miocene sediments Eocene and Holocene deposits.





#### 4.1.5 Water resources

##### *Surface water*

The Ismailia Canal is the largest water body within the general area. A small irrigation canal runs from the Ismailia Canal to the cultivated area. **The projected work is planned along existing roads; no pipelines will be passing through any of the aforementioned surface waters.**

##### *Groundwater*

The ground water consists of deep Eocene, Miocene and Oligocene and Quaternary aquifers<sup>5</sup>.

**During the project construction activities, the excavation depth does not exceed 1 meter, therefore groundwater is unlikely to be encountered.**

#### 4.1.6 Terrestrial Environment

**The connections of pipelines to households are planned in urbanized areas, where flora and fauna of significance do not occur.**

##### *Flora*

The common field crops in the surrounding area are maize, rice, wheat, tomato, grape, and citrus species, in addition to eucalyptus and date.

**The projected works are to take place in urbanized areas; vegetation is unlikely to be encountered.**

##### *Fauna*

Domesticated animals such as donkeys and horses were observed pulling carriages. Stray dogs were also observed. **The projected works are to take place in urbanized areas; fauna of significance is unlikely to be encountered.**

##### *Statutorily protected areas*

El Hadtha is not located within any statutorily Protected Area<sup>6</sup>.

##### *Birds*

El Hadtha does not lie within the Important Bird Area (IBA)<sup>7</sup>

#### 4.1.7 Physical cultural resources

**As the natural gas connections project will only take place in urbanized and semi-urbanized areas, no physical cultural resources are expected to be found.** In addition, one of the conditions for connecting natural gas to a given area is the presence of all other underground

---

<sup>5</sup> El-Ghawaby, A. (2012): Preparation of database for land use management in North East of Cairo, PhD. Thesis.

<sup>6</sup> [http://www.ecaa.gov.eg/Portals/0/ecaaReports/N-protect/Protectorates2013\\_A3En\\_Ar\\_Existing\\_Future.pdf](http://www.ecaa.gov.eg/Portals/0/ecaaReports/N-protect/Protectorates2013_A3En_Ar_Existing_Future.pdf)

<sup>7</sup> <http://www.birdlife.org/datazone/userfiles/file/IBAs/AfricaCntryPDFs/Egypt.pdf>



utilities in that area. This means that excavation will take place in streets that have already been excavated and include underground utilities.

**The following is listed as a general description of the city hosting the project but is of no direct relevance to project area.** Nevertheless, an environmental management and monitoring actions and chance finds procedure are included in Annex 2 of the this report (in the unlikely case of encountering such sites or building in project areas.)

**Mosques of Salah Nagy, Al Hoda, Al Kebir, Al Shohada, Othman Ibn Affan, Al Hag Aly Barakat.**

**Cemeteries are located north of Shalaqan.**

#### **4.1.8 Road distribution network**

The main roads connecting El Hadtha to other areas in Shalaqan and El Qanater Al Khairia are:

- Ring road
- Amr Ebn El AS street
- Esco road
- Mostorod - Shebin El Qanater street

**No works are planned on main roads.**

#### **Urban primary and secondary arterial streets**

Urban arterial streets are 3-4 lanes wide, partially paved with asphalt and partially dusty and rocky. Urban roads carry major portions of traffic in and out of urban areas. Urban streets are congested with pick-up trucks, cars, Tuk Tuks, carriages pulled by donkeys, bicycles, motorcycles and pedestrians. Secondary streets are mostly dusty and rocky. Small local businesses such as cafes and kiosks may be present on urban streets.

Urban streets include Abu El Gheyth-Al Khairia, West el Balad Al Qanater, Al Souq el Qadim, and Al Souq Al Gedid. On the road of Abu El Gheyth- Al Qanater Al Khairia, congestion lasts from 6:00- 8:30 am. In the afternoon, congestion is mainly due to Coca Cola trucks.

#### **Local streets**

Local streets are 2 lanes wide and serve residential and commercial areas. Local and distributor streets within Al Hadtha are dusty and rocky. Street parking is allowed. Those streets are congested with vehicles such as Tuk Tuks, carriages pulled by donkeys, pedestrians, and bicycles.



Figure 4-5: Examples of urban primary streets in Al Hadtha







**Figure 4-6: Example of an urban secondary street in Al Hadtha**



**Figure 4-7: Examples of local streets in Al Hadtha**



**Figure 4-8: Local streets and market (left) in Al Hadtha**

Considering the dusty/unpaved aspect of some of the urban and local streets in Qalyubeya as whole and including Al Hadtha, excavation works are likely to cause increased dust emissions. The impact assessment and mitigation measures are addressed in chapters 5 and 7.

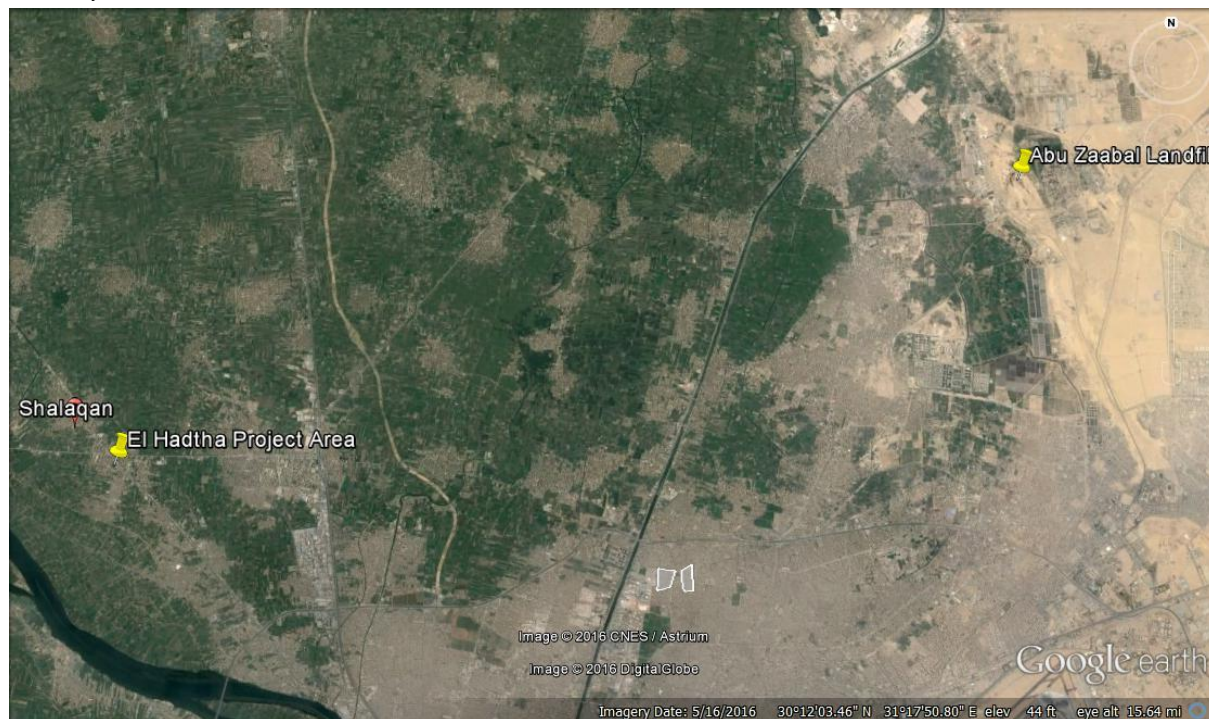
#### **4.1.9 Waste management**

For the gas connection project: Excavation wastes are used to rehabilitate the roads. Steel pipe cuttings and other scrap items are collected and auctioned off once a year.



The Nasreya & UNICO facilities in Alexandria are the only designated entities in Egypt for disposal of non-medical hazardous waste. This includes empty paint cans which are collected stored at the company depot in Abu Rawash and collected by licensed hazardous waste handlers for disposal in the Alexandria facilities.

Domestic waste is collected by the local governmental unit and disposed in the dump site the main sanitary landfill in Abu Zaabal.



**Figure 4-9: Location of Abu Zaabal landfill about 25 km East of El Hadtha project area**

#### 4.1.10 Physical structures

The majority of buildings are constructed from red brick houses in relatively tight streets. The construction materials of the walls and ceilings are one of the main bases and conditions required to install the NG. All of the surveyed sample live in buildings that are constructed of concrete and red brick and 98.6% in El Hadtha population live in apartments.

Regarding street conditions, the majority of them vary between 3-25 meters width. That was an indication of the high probability to get the NG installed. Streets in El Hadtha are mostly paved while smaller streets not covered with asphalt. This is an important factor for determining street restoration plans and cost.





---

## 4.2 Socioeconomic Baseline

---

### 4.2.1 Administrative division

El Hadtha is an extension of Shalaqan area that are both located in El Qanater El Khairia District of Qalubia Governorate. There is no information available on the level of El Hadtha. Therefore the team relied on information available on District level.

Total area of El-Qanater Al Khairia Markaz comes to 103.22 km<sup>2</sup> and is administratively divided into 4 rural local units which consist of 13 villages and 89 hamlets. With a total population of 477,814 residents as mentioned in the statistical Year Book of Qalubia Governorate 2015

El Qanater El Khairia contains mostly agricultural land with its total agricultural area reaching 18,768 Feddans out of a total area of 25,209 Feddans.

### 4.2.2 Demographic characteristics

#### *Total Population*

The total population of El Qanater El Khairia Markaz is estimated to have reached 477,814 residents in 2015.

#### *Rate of Natural Increase*

Given the absence of information about the birth rate in Qalubia is 27.30 births per 1000 persons. The natural growth rate is 22.30 per thousand persons. The IDSC 2012 Description of the Egyptian Governorate reported that the neonatal mortality rate is 4.80 per 1000, while infant mortality is 14.4 per thousand live births. With regard to the children below five years of age, the mortality rate is 12.10 per thousand live births.

### 4.2.3 Living Conditions

#### *Household Size and Density*

A household is defined as “Family (and non-family) members who share residence and livelihood, and operate as one social and economic unit”. The average family size in El Qanater El Khairia is 4.19 persons per household at a total of 114,037 households, as per the 2015 results of Qalubia’s Statistical Yearbook.

#### *Dwelling characteristics*

The type of dwelling should be highlighted in order to identify the probability to install the NG to those houses. 98.6% of the sample surveyed in El Hadtha live in an apartment. The majority of buildings are red brick houses that were built with no legal permissions in relatively narrow streets.



**Figure 4-10: prevalent building type**



**Figure 4-11: Women in front of the LPG outlet**

The construction materials of the walls and ceilings are one of the main bases and conditions required to install the NG. It was reported that all of the sample surveyed live in buildings that are constructed of concrete and red bricks.

Regarding the legal status of the buildings, the group discussions reflected that a percentage of the buildings are constructed without legal permissions. Thus, they are probably not entitled for NG installation.

#### 4.2.4 Access to Basic Services

##### *Access to Electricity*

The number of subscribers to the electricity utility in El Hadtha is around 99.7%. The census showed that the majority of households use electricity as the main source of lighting.

##### *Access to potable water & Sanitation Network*

The governorate depends almost entirely on Nile water for all its water needs. Accessibility to potable water is high in El Hadtha. According to the poverty study of 2014, 99.3% of El Hadtha residents have access to potable water.

The coverage of sanitation connections for households in El Hadtha is rather high at 77.08%. This high coverage will reflect on the ability to connect NG in the project areas.

##### *Education*

Education is perceived as the primary way that can help population to withstand poverty. On the scale of El Hadtha, 33.69% of the populations are illiterate. Whereas 22.91% completed their basic education.

**Table 4-5: %Distribution of El Hadtha population by educational status**

Level	Illiteracy rate	Basic education	Intermediate schooling	University degree
El Hadtha	33.69%	22.91%	23.29%	5.48%

Source: Poverty Mapping 2013-CAPMAS





### Unemployment and Work Status

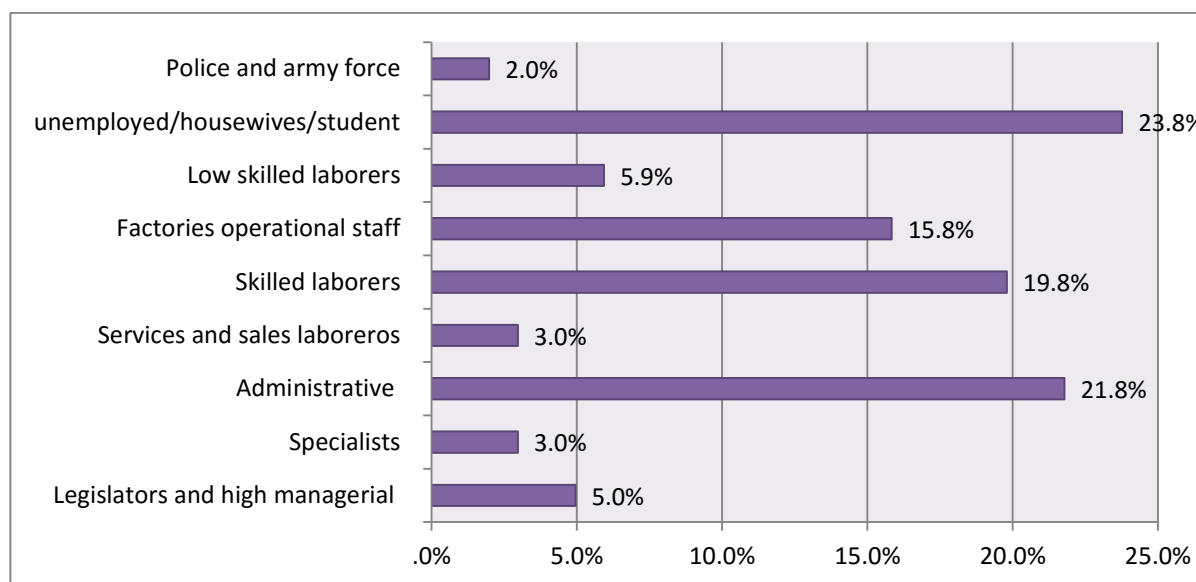
The unemployment ratio in El Hadtha is 10.9% which is considerably low in comparison with the national average of 24%. This gap in unemployment between national average and El Hadtha shows as follows:

**Table -4-6: % Distribution of El Hadtha population by work status and sex**

Level	Workers				Unemployment
	Unpaid employee	Unpaid female employees	Adult wage workers	Adult female wage workers	Rate
<b>El Hadtha</b>	52.04%	9.25%	□ 5.42%	3.28%	10.9%

Source: Poverty Mapping 2013-CAPMAS

With regards to the type of work performed by the breadwinner of the sample surveyed, 23.8% of the male sample surveyed do not work (they are retired, unemployed or students). About 19.8% work as skilled laborers, 21.8% work as government employees whereas 5.9% work as low skilled laborers.



**Figure 4-12: % Distribution of El Hadtha population by work status and sex of the breadwinner**

Source: Data collected under the SSESIA

#### 4.2.5 Poverty index

The extreme poverty measure is very close to US\$1.25 per day (MDG 1), whereas the upper poverty measure is very close to US\$2.5 per day. The equivalence is calculated at a purchasing power parity (purchasing power parity) exchange rate of US\$1=LE 3.1 for 2008/2009. (Handousa, 2010). According to poverty mapping developed by CAPMAS in 2013. The total percentage of poor people in El Hadtha is estimated to be 17.7%.



#### 4.2.6 Income and expenditure

NG installation project necessitates a clear determination of poverty through analyzing the income and expenditure of household. Reliability of expenditure data is higher than income. People are more willing to talk about expenditure rather than income. Thus, the study focused on the breadwinner who supports family financially. The expenditure and income of surveyed El Hadtha households reflected that around 73.3% of the surveyed sample earn between 1000 and 2500 EGP/month. On the other hand, around 77.2% of the total surveyed El Hadtha populations spend between 1500 – 2500 EGP per month.

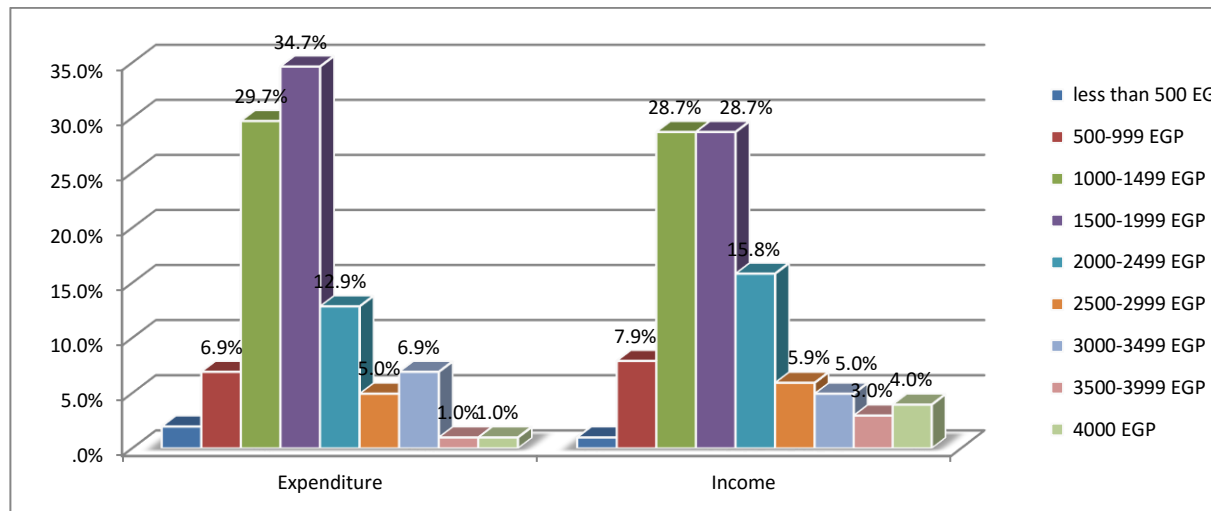


Figure 4-13: % Distribution of population by income & expenditure and sex

Source: Data collection results

#### 4.2.7 Fuel currently used in households

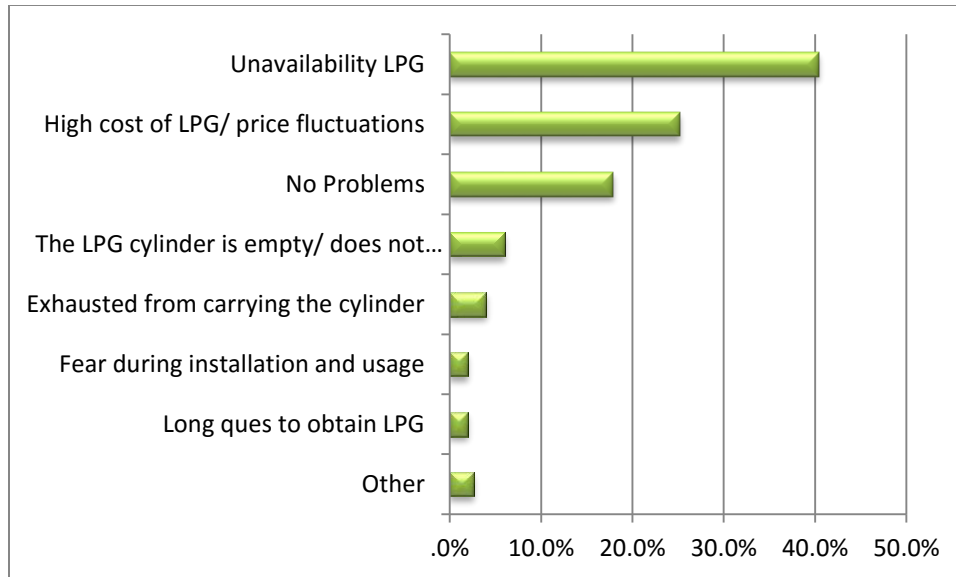
100% of the surveyed sample in El Hadtha reported that the main type of fuel used for cooking is the LPG cylinders. The source of the cooking fuel is mainly the LPG vendor (83.2%). The second source is the LPG warehouses (16.8%).

It is worth noting that the LPG fuel is used also for baking in house baking ovens which cannot be operated with NG. This factor was one of the main concerns raised by the community during the consultation activities.

Regarding the fuel used for water heating, 60.4% of the sample surveyed in El Hadtha relies upon electricity whereas 39.6% rely on LPG; the difference of the range between these two percentages is associated with the differences between rural and urban areas, where urban primary use electricity as type of water heating fuel.

#### 4.2.8 Problems faced with the current household fuel

The study aimed at highlighting problems associated with the LPG cylinders in order to verify the willingness of community people to convert to the natural gas. 40.4% of El Hadtha sample reported the unavailability of LPG as the main problem, while 25.2% reported high cost of the LPG cylinder and price fluctuations, particularly, during the shortage period in winter, and 17.9% reported having no problems.



**Table 4-7: % Distribution of the problems related to LPG cylinders**

Problems with the current fuel	Percent
Other	2.6%
Long ques to obtain LPG	2.0%
Fear during installation and usage	2.0%
Exhausted from carrying the cylinder	4.0%
The LPG cylinder is empty/ does not last long	6.0%
No Problems	17.9%
High cost of LPG/ price fluctuations	25.2%
Unavailability LPG	40.4%

Regarding problems related with water heating using LPG cylinders, 17.9% of the sample reported having no problems and 40.4% reported unavailability of the LPG cylinder.

#### 4.2.9 Perception towards the project

Throughout the various consultation and engagement activities, the team experienced and recorded remarkable and overwhelming public acceptance, even eagerness, by the community and the governmental stakeholders towards the proposed project. The indignity and financial hardships experienced by scores of Egyptian families (especially women) in obtaining LPG cylinders (the current household fuel) was revealed through testimonies over all targeted governorates during the preparation of the framework and the site specific studies.

Community perceptions were investigated in order to gain better understanding for the hosting communities' attitude towards the project. Overall perception of the project and of NG by the community was positive with the percentage of 97%, with exception of 2%, who think that this project may have only average influence, and 1% thought of the project as of a bad influence.



#### 4.2.10 Gender dimension of the current type of fuel

LPG salespersons play a major role in the domestic labor of handling of LPG. Women seem more involved in installing LPG cylinders in El Hadtha. According to respondents from El Hadtha, the percentages are relatively similar to each other. For fetching the cylinders and carrying them up the stairs to the apartment, the LPG salesperson plays this role with a percentage of 75.2%. It is worth noting that the role of the LPG salesperson remains the same in bringing the cylinder from the outlet to be 87.1%. Regarding bringing the cylinder upstairs, it is 50.5% the LPG salesperson's responsibility, followed by the male family member at 28.7%. Regarding the installation process once the cylinder is inside the house, the female family member shares the responsibility with 41.6%. The LPG sales persons are responsible for selling the LPG cylinders as well as delivering it upstairs to the house for an additional cost.

**Table 4-8:% Distribution of El Hadtha sample by roles and responsibility related to LPG**

		<b>Total</b>
<b>Person takes the LPG from outlet</b>	LPG salesperson	87.1%
	Male family member	5.9%
	Female Family member	6.9%
<b>Person takes the LPG upstairs</b>	LPG salesperson	50.5%
	Male family member	28.7%
	Female family member	20.8%
<b>Person installs the LPG to your cooker</b>	LPG salesperson	6.9%
	Male family member	50.5%
	Female family members	41.6%
	Other males	1.0%



**Figure 4-14: A woman transporting an LPG cylinder in El Hadtha**



**Figure 4-15: Children transporting LPG cylinders in El Hadtha**

#### 4.2.11 Willingness to pay and Affordability

At the time of the current ESIA, around 86.1% of the respondents in El Hadtha indicated that the price of LPG cylinder falls in the price range of 11-20 EGP and 11.9% of surveyed males said that the price of an LPG cylinder is less than 11 EGP. Additionally, 2% indicated to be 21-30 EGP.

On average each household consume 1.506 LPG cylinder for cooking, indicating that each house pay about 22.59 EGP per month for cooking fuel. The average cost of electric water heating was extracted from the total amount of the electricity bill to be 11.95 EGP.

Monthly installment value was investigated among the whole sample. The methods of payments discussed revealed that 69.3% of the samples surveyed are willing to pay in installments compared to 30.7% for cash payment

Regardless to various proposed types of installments, it is anticipated that the ultra-poor might not afford paying for the installments. Subsequently, investigating the potential mechanisms the poor might adopt to overcome such problem should be highlighted with the poor sample surveyed who spend less than 1620 EGP per month as defined by CAPMAS poverty level in 2013. All poor sample surveyed who spend less than 500 EGP reported that they will pay in installment, while 57.1% of those spending less than 1000 EGP reported that they will pay in installment. 28.6% of the same group reported that they can borrow money. The FGD results reflected that poor people can get money from *Mansour Amer* the charity NGO. The study team investigated the probability of having such loans or financial support from the NGO. They reported that they can offer long term loans with no interest.

Monthly installment value was investigated among the whole sample. The most preferred installment with 27% acceptance from the respondents is 35 EGP/month over 5 years, followed by 19% for 31 EGP/month over 6 years; around 11% preferred both to pay 74 EGP/month over 2 years and 28 EGP/month for 7 years. It was difficult to attribute the preference for the installment schemes to the poverty conditions.



## 5 Environmental and Social Impacts

The environmental and social advantages of switching household fuel from LPG cylinders to natural gas pipelines are diverse. On the residential level, the proposed project will lead to improved safety, reduced physical/social/financial hardships, and secure home fuel supply. On the national level, it promotes the utilization of Egyptian natural resources and reduces the subsidy and import burden. Even on the global level, the project involves cleaner fuel with reduced carbon footprint.

A thorough analysis of environmental and social impacts is important to detail an effective management and monitoring plan which will minimize negative impacts and maximize positives.

The assessment of impacts distinguishes between the construction phase and the operation phase.

### 5.1 Positive Impacts

#### 5.1.1 During the construction phase

##### *Provide direct job opportunities to skilled and semi-skilled labourers*

- The project is expected to result in the creation of job opportunities, both directly and indirectly. Based on similar projects implemented recently by EGAS and the local distribution company, the daily average number of workers during the peak time will be about 125 workers. The total number of new short term job opportunities within the project areas is estimated at 130-150 temporary jobs they are segregated as follows:
  - Up to 20% semi-skilled workers on a temporary basis
  - Up to 30% local construction workers for water heater vent installations
  - Up to 50% daily wage workers for street drilling
- In order to maximize employment opportunities in the local communities it is anticipated that training will be required for currently unskilled workers. On-the-job training will also supplement opportunities for the local workforce for both temporary construction roles and for long-term operation phase positions, where these are available.

##### *Create indirect opportunities*

- As part of the construction stage, a lot of indirect benefits are expected to be sensed in the targeted areas due to the need for more supporting services to the workers and contractors who will be working in the various locations. This could include, but will not be limited to accommodation, food supply, transport, trade, security, manufacturing... etc.

#### 5.1.2 During the operation phase

- As indicated in the Baseline Chapter, women are key players in the current domestic activities related to handling LPG and managing its shortage. Being the party affected most from the shortfalls of the use of LPG, the NG project is expected to be of special and major benefits to women. This includes, but is not limited to, clean and continuous source of fuel that is safe and does not require any physical effort and is very reasonable in terms of consumption cost. Time saving is among the benefits to women. The use of a reliable





source of energy will allow women to accomplish the domestic activities in less time and this will potentially open a space for better utilization for the saved time.

- Constantly available and reliable fuel for home use
- Reduced expenditure on LPG importation and subsidies, as ten thousand connections will be installed in the area. Each household consumes 2.5 LPG cylinder monthly. Accordingly the total number of LPG cylinders consumed is about 25 thousand LPG cylinder per month. The subsidy value is about 70 EGP per each LPG cylinder. Consequently, the total saved monthly subsidy will be about 1.75 million EGP monthly. This will result in total annual savings of 21 million EGP
- Significantly lower leakage and fire risk compared to LPG
- Improved safety due to low pressure (20 mBar) compared to cylinders
- Beneficiaries to benefit from good Customer service and emergency response by qualified personnel/technicians.
- Eliminate the hardships that special groups like the physically challenged, women, and the elderly had to face in handling LPG.
- Limiting possible child labor in LPG cylinder distribution.

## 5.2 Anticipated Negative Impacts

### 5.2.1 Impact Assessment Methodology

To assess the impacts of the project activities on environmental and social receptors, a semi-quantitative approach based on the Leopold Impact Assessment Methodology with Buroz Relevant Integrated Criteria was adopted.

Detailed assessment matrices are shown in Annex 4. The table below presents the classification of impact ratings and respective importance of impact values.

Importance of Impact	Impact rating	
0-25	None or irrelevant (no impact)	
26-50	Minor severity (minimal impact; restricted to the work site and immediate surroundings)	
51-75	Medium severity (larger scale impacts: local or regional; appropriate mitigation measures readily available)	
76-300	Major severity (Severe/long-term local/regional/global impacts; for negative impacts mitigation significant)	



### 5.3 Potential Negative Impacts during Construction

#### 5.3.1 Reduction of Traffic Flow (disruption of local and regional traffic)

##### *Environmental impacts*

During the mobilization, preparation phases and construction phases: Mobilization of heavy machinery, asphalt breaking, excavation, placement of piping, and backfill activities are bound to limit traffic and accessibility. The impact of works on traffic flow and local access will be dependent on the type of road accessed during project activity.

##### **Main roads (highways)**

No works are planned on main roads; therefore, the project will not directly impact circulation on main roads. An indirect impact can be increased flow of vehicles as urban roads are avoided.

##### **Urban roads**

On urban roads, mobilization, preparation and construction phases will entail narrowing roads by longitudinal and/or lateral excavation or totally blocking narrow or side roads as well as limiting or prohibiting parking along the length of the works. Access to buildings and shop entrances may be limited or constricted in cases where excavations form obstacles for pedestrians and cargo.

**Coordinating with and obtaining approvals from local government and traffic police is vital to avoid delays, objections, and public inconvenience to the work program.**

On urban roads, the impact on traffic flow and local accessibility are of **medium severity**.

##### **Local roads**

As pipeline installation will be taking place on roads, local access on select parts of the road will be ceased and will likely restrict local access to residents into and out of their households. As regular sized vehicles are not the principal mode of transport on local roads, congestion of cars is not anticipated. The inconvenience is expected to affect the flow of Tuk Tuks by slowing them down. However, considering their small size, congestion is not likely to be significant.

Inconvenience to the residents will last for the duration of the construction phase activities, namely, excavation and rehabilitation of the road, which will be done on the same day with no pits being left open overnight. Therefore, the duration of inconvenience and slowed traffic of Tuk Tuks etc. in affected areas will last for the duration of the work day i.e., 8-10 hours.

On local roads traffic congestion of regular sized vehicles will be insignificant. The main impact will be inconvenience to residents in accessing residential buildings and will likely be of minor severity.

On local roads, traffic and access limitation impacts are temporary, local, and of minor severity

##### *Socioeconomic impacts*

The project will result in inconvenience and disturbance to local communities and business and delay in the various daily activities due to the following:

Traffic congestion will result in various unfavorable socioeconomic impacts. i.e.:



- 1- Microbuses and tuk tuks may find difficulty in maneuvering the streets that will be dug during the project construction. This will increase their oil consumption and reduce their ability to move quickly and transport less clients as each errand will take more time.
- 2- There might be a disturbance to community people due to the traffic congestion

### 5.3.2 Air Emissions

#### *Environmental impacts*

WB requirements and Law 4/1994 (modified by laws 9/2009 & 105/2015) stipulates strict air quality standards. Air emissions (gases and particulates) during construction shall arise from:

- Particulate matter and suspended solids from excavation/backfilling operations
- Possible dispersion from stockpiles of waste or sand used for filling trenches.
- Exhaust from excavation equipment and heavy machinery (excavators, trenchers, loaders, trucks) containing SO<sub>x</sub>, NO<sub>x</sub>, CO, VOCs, etc.
- Traffic congestions resulting from road closure or slowing down of traffic due to excavation works.

#### **Dust**

The impact of dust generation (particulate matter) will be limited to the working hours as excavation and backfilling are carried out within the same day.

Excavation on dusty or rocky roads such as local roads and some urban roads are likely to generate more dust compared to asphalted streets due to the dusty status of those roads.

#### **Gaseous pollutants emissions**

Provided machinery used during construction is certified and maintained as per guidelines, the increase in emissions stemming from the exhaust of machinery is unlikely to increase ambient levels beyond national and WB permissible levels.

On urban roads, traffic congestion may lead to increased exhaust emissions. Traffic management with local authority will reduce the impact of works on road congestion and associated emissions.

#### *Socioeconomic impacts*

Air emission might result in health problems to allergic community members.

Air emissions impacts are expected to be temporary, local, and of minor severity.

### 5.3.3 Noise

#### *Environmental impacts*

Construction activities of the gas distribution network will likely increase noise levels due to excavation and heavy machinery. Typical construction noise includes noise intensity due to engine operation, and intermittent impacts which may take place during demolition of asphalt, either by a trencher or by a jack hammer. As discussed previously, the WB/IFC guidelines and Law 4/1994-9/2009-105/2015 have defined standards for noise intensity and exposure periods in the work



place, in addition to certain limits for ambient noise levels for different types of urban and rural areas.

Noise impacts on construction workers, technicians and engineers in direct vicinity of the excavation works and heavy machinery are considered more significant than those on residents. Traffic congestions, which could be caused by excavation works, may increase ambient average noise intensity levels.

#### *Socioeconomic impacts*

Noise might result in health problems to the workers, engineers and technicians.

Noise impacts are expected to be temporary, local, and of minor severity.

### **5.3.4 Risk on Infrastructure and underground utilities**

#### *Environmental impacts*

##### Gas network connection

Underground utilities and infrastructure pipelines (such as water, sewerage and telecommunication) have been installed years ago without accurate documentation and maps for its routes and depths. Therefore, the risk of damage to such utilities during excavations for natural gas pipeline installation is possible.

The most significant potential environmental impact will arise in case a sewerage pipe is broken and wastewater potentially accumulating in the trench. There is also the possibility of overflowing to the streets causing nuisance to the surrounding environment.

#### *Socioeconomic impacts*

Breaking a water supply pipe may result in cutting the supply to a number of residential units, which may lead residents to use other sources of water which may be either expensive or unsafe.

Damaging sanitation network, electricity and water supply result in severe disturbance to community people. Yet such problem takes short time (no more than 4-8 days). Additionally, the contractor will be responsible of compensating for damaged pipes.

Impacts on underground utilities are expected to be temporary, local, and of minor severity

### **5.3.5 Impacts related to land**

#### *Socioeconomic impact*

The project will not entail any land acquisition in El Hadtha as there will be no need for any land during construction or operation. There will be no new PRS or extension to current PRSs. Additionally, the connection network will penetrate the main urban street and side roads. This will not result in any land acquisition either temporary or permanent.

Land acquisition impacts are of irrelevant severity



### 5.3.6 Possible effects on vulnerable structures<sup>8</sup>

#### *Environmental impacts*

##### Gas network connection

Dewatering activities: Excavation for natural gas pipelines is usually shallow and does not exceed 1.0 meter depth. **Groundwater is typically not encountered at shallow depths.** However, if groundwater is encountered, dewatering will be applied. If dewatering activities are sustained for a long duration, differential settlement of the fine soil can jeopardize the integrity of weak structures in the surrounding area.

Drilling vibrations: Workers are accustomed to manually drill to prevent vibrations near sensitive structures.

Another possible impact on structurally-vulnerable buildings is weakening the structural system during drilling holes in the walls for riser connections on the side of the building or for internal connections to the household. The hole for the pipe usually is small compared to the wall section. Moreover, beams can easily be avoided by carefully selecting the distance of the drilling from the ceiling. For skeleton type buildings, drilling in columns or beams could have a significant effect on the structure, but this risk is well understood among connection workers and could be avoided.

Structural impacts on vulnerable buildings are of irrelevant severity
---

### 5.3.7 Effect on Culturally Valuable Sites<sup>9</sup>

Effects on culturally valuable sites (monuments, archaeological, paleontological, historical, architectural, religious, aesthetic or other cultural significance) may involve:

1. Structural damage to a monument due to dewatering during excavation.
2. Damages to monuments' foundations due to excavation works.
3. Damage to the monument body by vibration of machinery.
4. Reducing the aesthetic appeal of the site or building.
5. Improper management of discovered antiquities during excavation (chance finds).

If dewatering is needed, may lead to differential settlement of the soil surrounding the monument foundations could result. Shallow foundations may be affected by excavation works. This may cause differential settlement and may cause cracks and stability risks to the monument body.

Vibrations caused by machinery such as a trencher and jack hammer may cause cracks and surface damage to the stones of the monument, and risks to its stability.

According to the CULTNAT classification, a site may be classified as architecturally-valuable for its artistic design, its elevation view, artistic balcony, windows, domes or other components. Fixing gas risers and connections next to such components may reduce their artistic value.

Chance finds during excavation are highly unlikely within the project area as the streets have been previously excavated for installing underground utilities. However, Antiquities Law provides clear

---

<sup>8</sup> If encountered within project areas.

<sup>9</sup> If encountered within project areas.



guidelines for action in the case of chance finds. It also states that a representative of the antiquities department must be present during excavations in areas adjacent to antiquities sites. Please see Annex 2 that outlines procedures in case of chance finds.

The works for the gas distribution network are not planned nearby physical cultural resources as described in the baseline of the project area in chapter 4.

Impacts on culturally valuable sites and buildings are of irrelevant severity

### 5.3.8 Effect on ecological systems (green areas/farmland)

#### *Environmental impacts*

During construction of the gas distribution network, excavations and pipe laying will mostly be aligned along routes previously excavated or paved.

No protected areas will be encountered in the alignment of the lines.

Impacts on ecological systems are expected to be irrelevant.

### 5.3.9 Solid and Liquid Waste Management

#### *Environmental impacts*

Wastes that are generated during the construction phase include:

- Excavated soil and excess sand; concrete and bricks waste;
- Broken asphalt in the case of paved roads;
- Cans containing paint used on steel pipes in household connections
- Containers of chemicals and lubricant oils used for construction machinery;
- Possibly damaged asbestos water pipes during excavation; and
- Dewatered product from trenches.
- Construction waste estimates are in the range of 100-120 m<sup>3</sup>/km.

Excavated soil and concrete/bricks waste are inert materials. Improper disposal of such wastes will only have aesthetic effects on the disposal site. The legal standards of Law 4/1994-9/2009-105/2015 for the Environment and Law 38/1967 stipulate that these wastes should be disposed of in licensed sites by the local authority, which minimizes any aesthetic effects of such waste.

Asphalt waste may contain hazardous components, such as tar, lubricating oils, some heavy metals, etc. However, its solid nature minimizes the transport risk of such components to the environment. Disposal of asphalt waste to a construction waste disposal site is common practice in Egypt, and is not normally associated with environmental risks because of dry weather.

Empty containers of chemicals, lubricating oils, and paint are considered hazardous waste. They should be disposed of in an approved hazardous waste handling facility. This is not a direct result of construction activities, but rather relates to maintenance of equipment. By preventing fueling/lubricating activities on construction sites no empty containers will need disposal.

Asbestos waste could result if an underground water pipe is broken during excavation. If encountered, wasted parts of the pipe must be sprayed with water, to prevent emissions of





asbestos-containing dust, and transported to an approved hazardous waste landfill. Asbestos waste may pose significant health risks to workers, pedestrians and residents of neighboring areas. Therefore, efficient management of such waste, if generated, will be very important. The probability of generating asbestos waste is relatively low as the damage is usually repaired locally without the need for pipe replacement. Management and disposal of the generated waste is the responsibility of the Water Authority performing the repairs.

Improper drainage of dewatering water may result in forming stagnant water ponds around the construction site, which can develop, if not drained, infiltrated or evaporated, to form nuisance and an environment for breeding of insects. Normally dewatered product is relatively clean water, which should be drained to the sewer system. To conserve water, if dewatered groundwater is free of perceivable pollution, it will be- to the extent possible- used on- or around the work site or discharged into the nearest canal to be used for irrigation. When dewatering is performed from a contaminated trench or near a source of pollution seepage to groundwater, contaminated water is collected for certified treatment/disposal according to WB/IFC guidelines and National Laws 93/1962 and 48/1982, respectively.

#### *Socioeconomic impacts*

Waste contractors and recycling/disposal sites will benefit from waste disposal contracts.

If waste is not managed properly, it will result in health problems to the surrounding communities.

Overall, waste generation impacts are of minor severity

### **5.3.10 Street condition deterioration**

#### *Environmental impacts*

Streets rehabilitation or restoration following pipeline network installation: is referred to by an Egyptian legal/institutional expression (رد الشيء لإصله) that signifies the responsibility to “restore to original condition”. In the context of the project, it applies to the responsibility of the implementing company to provide the necessary resources to re-pave roads and streets to the original state after natural gas excavation and installation works. The current arrangement is that the implementing entity performs the backfilling of the excavated trenches and agrees a restoration fee with the local government unit (district) to cover the balance of the restoration and pavement cost. The local unit uses the fee to include the restoration and re-pavement of the streets in its “pavements plan”.

#### *Socioeconomic impacts*

Delays in street restoration may lead to varying degrees of damage to vehicles, loss of access and business, traffic congestions with associated delays and emissions, and a potentially significant public discontentment.

Although the restoration impact may be temporary, localized, and of minor severity, it is perceived by the public as major inconvenience.

### **5.3.11 Overconsumption of community resources**

#### *Environmental impacts*



No probability of environmental impacts pertaining to overconsumption of community resources.

*Socioeconomic impacts*

Generally speaking having workers in small cities might result in unfavorable impact on the available resources, e.g. pressure on accommodation, food, health care and medication and potable source of water. Given the size of population in project sites and the availability of most of services; the limited number of workers (100 worker) will not result in any significant impact on the community resources.

The impact of overconsumption of community resources is of irrelevant severity given that the limited number of workers is small in comparison to the number of residents in the area.

**5.3.12 Community health and safety**

*Environmental impacts*

No probability of environmental impacts on community health and safety

*Socioeconomic impacts*

Negligent workers may cause accidents harmful to the community members, particularly children and old people, especially close to the digging sites. The workers should support children and old people in case of crossing digging areas. There should also be caution tapes to stop community people from accessing construction sites. In case of the workers and contractor adhere to such procedures the community health and safety impact will be limited.

With compliance to the health and safety measures, impact related to the community health and safety during the construction phase will be **minor**

**5.3.13 Visual intrusion**

Project activities will entail piling of sands and moving of vehicles in various construction sites. Moreover, the temporary storage areas will be used to store pipes, painting materials and safety equipment. That will result in significant visual intrusion impact.

Impact related to the visual intrusion during the construction phase is **irrelevant**

**5.3.14 Labor conditions and occupational health and safety**

Throughout this phase there will be many occupational health and safety risks to workers on the sites. These are generic risks associated with construction sites and include slips and falls; moving lorries and machinery; exposure to chemicals and other hazardous materials; exposure to electric shock and burns; weather related impacts (dehydration; heat stroke). This is short term (6-12 months) but because of the large number of unskilled workers who are reluctant to use Personal Protective Equipment, there might be some level of risk.

Impact related to Occupational health and safety during the construction phase is **medium severity**



## 5.4 Potential Negative Impacts during Operation

### 5.4.1 Community health and safety

In addition to a full array of safety and emergency precautions taken by EGAS and the implementing entities (**local Distribution companies: Egypt Gas for El Hadtha**), user safety is prioritized by stating emergency precautions on the household gas meter and by setting up emergency response centers. Impacts on user health and safety may occur through improper handling of piping and valves by the user. This may be due to a lack of awareness, illiteracy, or failures in piping or sealants.

Considering the low probability of occurrence and the lower density of natural gas (compared with current practice of LPG), impacts on community health and safety due to gas leaks is of minor severity.

### 5.4.2 Integrity of natural gas piping

#### *Environmental impacts*

Low-probability events may impact the integrity and safety of the NG network and components during the years of the operation phase.

- Geological and geotechnical events: earthquakes may result in geotechnical instabilities that lead to network breakage or leakage in multiple locations simultaneously. The geological and geotechnical history of the area may also lead to possible events.
- Sabotage: pipelines and other components may be targeted for sabotage.

#### *Socioeconomic impacts*

Adverse impact is expected in raising the fear of disruption of Gas supply

Leak impacts may be permanent and highly severe, however, considering the extremely low probability of occurrence, the impact is of minor severity.

### 5.4.3 Visual intrusion impacts

The installation of house connection and the chimney will affect the building There is a probability to affect the building, particularly, unique old buildings. Under certain technical and safety conditions it is not possible to avoid visually impacting the entrance of the apartment and dwellings with installed pipes.

Visual intrusion Impacts will be of irrelevant severity

### 5.4.4 Economic disturbance to the LPG distributors

There could be a Minor negative economic impact on LPG cylinders distributors. (Governmental sector- private sector who have license to distribute LPG cylinders- informal distributors). The LPG distributors will lose their income. However, their ability to move to other areas or change their business is high. Various previous NG projects have not influenced the informal LPG vendors.

The probability of such impact is **minor** as LPG distributors manage to perform alternative job.



---

## 5.5 Women and Vulnerable Groups

---

Vulnerable groups<sup>10</sup> are more exposed to the implications of various impacts and are more likely threatened to get in more impoverishment. The level of vulnerability of a certain group and the severity of the impact on these groups has been assessed. It is believed that certain groups are more vulnerable than others due to higher level of exposure to these impacts or lack of alternatives or survival methods that allow for coping with these impacts.

It is expected that poor women and female headed households will be able to access the project benefits through the installment schemes that EGAS is making available to encourage citizens to get connected to the project. The same benefits that women will gain from this project apply also to other vulnerable groups of elderlies and people with disabilities.

It is foreseen that the project will not have any unfavorable impacts on women and vulnerable groups.

---

<sup>10</sup> According to World Bank definition, *a vulnerable group is a population that has some specific characteristics that make it at higher risk of falling into poverty than others living in areas targeted by a project. Vulnerable groups include the elderly, the mentally and physically disabled, at-risk children and youth, ex-combatants, internally displaced people and returning refugees, HIV/AIDS- affected individuals and households, religious and ethnic minorities and, in some societies, women.*



## 6 Analysis of Alternatives

### 6.1 No Project Alternative

This Natural Gas Connections to Households Project is expected to yield many economic and social benefits in terms of providing a more stable energy source, achieving savings in LPG consumption and enhancing safety in utilizing energy.

The No-Project alternative is not favored as it simply deprives the Egyptian Public and Government of the social, economic, and environmental advantages detailed in section 5.1.

### 6.2 Energy Alternatives

-

- **Convert to Electricity:** The main possible alternative is to convert all homes to use electricity for all energy supply applications. Additional power stations would be needed to cope with the additional demand created by utilization of electricity in homes, which most probably would operate also by natural gas. Power losses in transmission and distribution are also significantly higher than their natural gas equivalents which would add to the overall inefficiency.

-

Energy alternatives do not provide favorable options to the proposed NG networking

### 6.3 Installation costs

The average natural gas connection installation cost is about 5600 EGP and consumers contribute a part of 1700 LE because the connection is heavily subsidized by the Government. This payment can be made either upfront or in installments over a period of time. Installment schemes are available to all community people.

The government of Egypt is negotiating with the project's financing organizations in order to secure additional subsidy to poor and marginalized groups. They also provide facilitation payments strategies through offering various installment schemes. The following are the main types of installments: 138 EGP/Month for 12 months, 74 EGP/Month for 24 months, 52 EGP/Month for 36 months, 42 EGP/Month for 48 months, 35 EGP/Month for 60 months, 31 EGP/Month for 72 months and 28 EGP/Month for 84 months<sup>11</sup>.

## 7 Environmental and Social Management & Monitoring Plan

### 7.1 Objectives of the ESM&MP

<sup>11</sup> In case of any change of the value of NG installation cost, the installment value might be changed



The objective of the Environmental and Social Management and Monitoring Plan (ESMMP), is to outline actions for minimizing or eliminating potential negative impacts and for monitoring the application and performance of mitigation measures. The ESMMP identifies roles and responsibilities for different stakeholders for implementation and monitoring of mitigations. This section also presents an assessment of the institutional capacity and institutional responsibilities for implementing the ESMMP.

Wherever applicable, the ESMMP is designed to accommodate alternative context-specific mitigations and monitoring measures.

**Overall, the following Environmental and Social measures are complementary to and do not substitute compliance to the detailed HSE guidelines, procedures, and actions adopted by EGAS and its subsidiary LDCs.**

In the following Management and Monitoring measures the term Local Distribution Company (LDC) refers to the gas company in charge of project implementation: **Egypt Gas.**

## **7.2 Management of Mitigation and Monitoring activities During Construction Phase**

### **7.2.1 Hotline**

During construction activities, a 24-7 Hotline (**129**) is available for customers and the public to report leaks, damage, emergencies, and/or incidents related to gas connections, components, infrastructure, and activities (inside or outside households) and to request repairs/emergency response/assistance.

This includes possible damage to other underground utility lines (water, wastewater, electricity, phone, Internet) and to buildings and physical structures or cultural sites during excavation/construction activities. It also includes reporting issues resulting from construction activities such as excessive/prolonged noise, vibration, waste, traffic, accessibility, visual, and other community health and safety impacts.

### **7.2.2 Management of Traffic Impacts**

The following mitigation measures are proposed to minimize traffic disruptions:

1. Construction During Off-peak Periods: Times of construction are identified by the local Traffic Department in a conditional excavation permit issued to the implementing company, based on the Traffic Department operational experience in the area,
2. Signage and Markings: Construction works require proper information disseminated to motorists. This can be done by provision of informational and directional signs posted prior to the construction. Pedestrian crossings can be also provided at proper locations.
3. Traffic Detour: To maintain traffic in critical streets at a reasonable level of service, the Traffic Department may implement traffic detouring
4. Re-structuring the Road Right-of-Way: The arterial road network generally exhibits a wide right-of-way. Normally, it would be possible to re-structure the road's cross section to accommodate the construction works and maintain traffic movements along the road.

Coordination between **Egypt Gas/EGAS** and the local traffic authority is imperative as the above mentioned mitigation measures will be implemented by, or in coordination with, the local Traffic





Department. Monitoring will be carried out by the local Traffic Department to make sure that flow reduction is within acceptable levels. Coordination should be established between the Traffic Department and the HSE Departments of the implementing gas companies (Local Distribution Companies- LDCs) to ensure compliance and adequate implementation of the identified mitigation measures. LDC HSE should record any comments by the Traffic Department regarding violation of excavation permits by the contractor.

### 7.2.3 Management of Air Emissions

The following mitigation measures are considered minimum standards:

1. Excavated soil stockpiles and stored sand should be located in sheltered areas. Stored fine sand should be covered with appropriate covering material<sup>12</sup>, such as polyethylene or textile sheets to avoid soil dispersion.
2. Transportation of excavation/construction waste should be through licensed and sufficiently equipped vehicles with a suitable special box or provided with a cover to prevent loose particles of waste and debris from escaping into the air or dropping on the road.
3. Disposal of excavation/construction waste should be in locations licensed by the local authority.

Air emissions of excavation machinery and diesel-powered electrical units should be within allowable legal limits. Because dust emissions from construction works include non-point sources such as excavation, direct emission levels cannot be measured. On the other hand, monitoring ambient total suspended particles or PM<sub>10</sub> could be misleading because of the interference of other sources. Therefore, monitoring activities should ensure point sources, i.e., exhaust of excavation machinery, are within the standards stipulated by the Law. Mitigation measures must be documented. Documentation should consist of standard operating procedures and monitoring reports for emission tests and complaints.

### Leaks of natural gas

A natural gas leak can result if integrity of pipes is jeopardized. The Local Distribution Company must coordinate with the local municipality to safely evacuate the area and deploy trained personnel to repair broken pipe based on an Emergency Response Plan.

### 7.2.4 Management of Noise

Mitigation measures for avoiding unacceptable, and illegal, noise levels include:

1. Prevent exposure of construction workers to different noise levels and noise impacts according to the Egyptian legal standards. This could be achieved through adjusting working hours, breaks, and exposure duration to be within permissible limits.
2. Provide construction workers with ear muffs.
3. Minimize construction through nighttime whenever possible. Implementing this measure should be balanced with avoiding peak hours of heavy traffic. If construction works are to take place on important traffic roads, avoiding traffic disturbance in day time may outweigh reducing noise levels in afternoon or night times and vice versa.

---

<sup>12</sup> Sufficient sheets should accompany work groups during the construction phase. Cost of sheets should be included in ESMP budget



Monitoring of noise levels during construction shall include:

1. Measurements of noise intensity at the locations of construction, where workers are exposed to the noise.
2. At locations where mechanical hammers are used, measurements of noise intensity of impacts, and the corresponding number of impacts at the construction location.
3. Recording complaints of the neighboring areas regarding the noise levels.

Documentation should consist of standard operating procedures and monitoring reports for noise measurement tests and complaints.

### **7.2.5 Management of Excavation Activities Posing Risk on Utilities**

LDCs follow established procedures to deal with emergency situations related to breaking underground utility and infrastructure lines. The company supervisor calls the Police Department and emergency department in the relevant utilities company for immediate repair of the damage, which the contractor is invoiced for. The mitigation measures below focus on preventive measures and documentation.

Mitigation measures for avoiding breaking underground utilities and infrastructure pipes:

1. Collecting most accurate maps for underground utilities and infrastructure routes from Information Centers in the various Governorates and asking them for site markings, whenever available, and making such data available to the contractor prior to commencing the works.
2. Boreholes to locate underground utilities before using mechanical excavation.
3. Once underground utilities are mapped or uncovered, horizontal and vertical clearances between natural gas lines and electricity lines must be respected for safety considerations.
4. In case an underground utility and infrastructure pipe has been damaged, standard procedures should be followed, as described before, in addition to preparing a documentation report for the accident. The documentation report should include:
  - a. Time and place of accident;
  - b. Name of contractor;
  - c. Type of underground utilities and infrastructure line;
  - d. Description of accident circumstances and causes;
  - e. Actions taken and responses of different parties, such as infrastructure company;
  - f. Duration of fixing the damage; and
  - g. Damage caused (description shall be according to observation, expertise judgment, reports of infrastructure company).

Monitoring activities for such risks, are basically documenting, analyzing reasons that led to the accident and updating procedures to avoid future accidents. Monitoring environmental consequences of such accidents, such as depth of effected soils, volumes of effected groundwater, and other social effects are believed to be unnecessary actions by the implementing company, though it might be recommended for the authority owning the infrastructure line (Water and Wastewater Authority or Telecommunication Authority) for their research activities.



## Management of Activities Posing Risk on Structures Stability<sup>13</sup>

1. Screening by a technical committee from the Design, Projects and Operations Departments of LDCs to identify areas/sectors including buildings with potential structural problems. Areas with potential problems should be excluded from the project.
2. In areas of high groundwater level, dewatering activities would be needed. Dewatering activities should follow a tight excavation/dewatering schedule through preplanning and supervision of implementation to avoid lengthy dewatering activities. If water resulting from dewatering is contaminated, it should be transferred to an adequate facility.
3. Minimize excavation intensity and vibrations from heavy equipment in the vicinity of vulnerable structures, if any. In case vulnerable structures are identified, excavation should be done manually.

Monitoring activities will be mainly performed through supervision of the work of LDCs, and reviewing site reports by the HSE supervisor.

### 7.2.6 Management of Culturally Valuable Sites<sup>14</sup>

Law 117/1983 for the Protection of antiquities has set certain standards that should be followed during excavation works near a registered antiquity site. Proposed mitigation measures include:

1. Identifying a comprehensive list of all registered antiquities falling within the domain of the project and possibly at risk from construction activities.
2. Provide supervision by the Supreme Council of Antiquities on implementation of construction works at identified locations.
3. If dewatering activities are to take place, the process should be undertaken under the supervision of foundation engineers who shall perform necessary soil investigations.
4. Reduce vibration, in identified locations of antiquities:
  - a. using manual tools whenever possible;
  - b. phasing work to eliminate vibrations from several machinery; and
  - c. Establish cutoff barrier through a vertical trench to absorb vibrations.
5. Fixing gas risers on the back of architecturally valuable structures.
6. Chance find process, in case an antiquity is found during excavation, includes stopping excavation works, and contacting the Supreme Council of Antiquities to handle the site.

Monitoring activities will be site specific according to the requirements and conditional permits granted by the Supreme Council for Antiquities.

1. Monitor vibration levels at the monument location during excavation.
2. Undertake geophysical survey for some locations prior to construction, according to the instructions of the Supreme Council of Antiquities.

The LDC site supervisor will be responsible for documenting the monitoring activities in monthly reports delivered to EGAS.

These mitigation measures, **if required**, shall be implemented by the Council, while the costs will be covered by LDCs.

---

<sup>13</sup> If encountered within project areas.

<sup>14</sup> If encountered within project areas.



### **7.2.7 Management of Waste Disposal**

The local unit is responsible for the pick-up and disposal of solid waste. Construction waste such as soil waste is disposed of. Domestic waste is collected from domiciles and collection sites and disposed.

#### ***Solid Waste***

1. Allocating certain areas, in each Sector, for stockpiling waste soil and construction waste, in coordination with the local authority.
2. No soil stockpiling is allowed on banks of waterways.
3. Maximize re-use of excavation waste as backfill for natural gas pipeline trenches.
4. Normally asphalt waste could be disposed of with other excavation waste/aggregates in the local non-hazardous waste site.
5. Solid waste from unlikely scenarios such as worker camps should be addressed in specific waste management plans, as appropriate

#### ***Liquid and hazardous waste***

1. Empty cans of oil-based paint resulting from painting the steel connection pipes to households are to be collected and sent back to nearest LDC depots for temporary storage until disposal at a hazardous waste facility (Nasreya or UNICO in Alexandria).
2. As an important pollution prevention measure, fueling, lubricating or adding chemicals for excavation should not take place at the construction site. Accordingly, no empty chemicals/oils containers will be generated by direct project activities.
3. Further to the above measure, in case waste containers of hazardous materials are generated in the construction site due to unusual circumstances, the LDC is responsible for ensuring that contractor should collect these containers and transfer it to the hazardous waste landfill in Nasreya or UNICO in Alexandria<sup>15</sup>. This measure should be specified in the construction contract and supervised by LDCs site supervisor.
4. If hazardous waste quantities generated are too small for isolated transport to the Nasreya landfill, a temporary storage site can be created. Coordination with waste authority will be imperative to secure a location and implement adequate procedures for storage depending on quantities and type of wastes until collection and shipping to Nasreya landfill. .
5. In case of damaging of asbestos pipes during excavation, the Water Authority, which will carry out the repairs, will be responsible for handling the waste asbestos according to their procedures.

---

<sup>15</sup> The Nasreya hazardous waste facility is currently being operated under supervision of Alexandria Governorate while UNICO (also in Alexandria) is approved by EEAA to treat and dispose of petroleum wastes.



6. Preplanning drainage of dewatering water and taking necessary permits from the water and wastewater authority, or irrigation authority. No land disposal should be accepted for the water
7. If dewatering is taking place from a contaminated trench, or contains hydrocarbons that could be observed or smelled, contaminated water should be collected in barrels and transported to a wastewater treatment facility.
8. Asphalt waste may contain hazardous components, such as tar, lubricating oils, heavy metals, etc. However, its solid nature minimizes the transport risk of such components to the environment. Disposal of asphalt waste to the municipal waste disposal site is common practice in Egypt as this is normally not associated with significant environmental risks because of the dry weather nature of the country.

In order to minimize risk of spillage of hazardous liquid wastes, the following general precautions should be taken:

- Pre-Plan the anticipated amounts of hazardous liquid materials (such as paint, oils, lubricants, fuel) to be used in the various activities in order to minimize leftovers and residuals.
- To the extent practical, seek to combine leftovers or residuals of the same liquid material/waste in order to minimize the number of containers containing hazardous residuals
- Ensure hazardous liquid material/waste containers are always sealed properly and secured from tipping/falling/damage/direct sunlight during transportation and storage (temporary and long-term)
- In case of spillage:
  - o avoid inhalation and sources of ignition
  - o cover and mix with sufficient amounts of sand using PPE and tools
  - o collect contaminated sand in clearly marked secure containers/bags
  - o Add sand to inventory of hazardous waste

Solid wastes generated during the construction phase are classified as non-hazardous (which includes inert wastes) and hazardous wastes. They are summarized in the tables below where the waste type, description, classification and method of treatment or disposal is explained.

Medical or healthcare wastes containing pathologic, contagious, or radioactive constituents as per the definitions of Ministry of Health decree 192 for the year 2001 should be collected, stored and transported separately from any other wastes. Several certified incinerators are available across Egyptian governorates in designated healthcare facilities. In the unlikely case of medical waste, arrangements should be made immediately with the local office of the ministry of health for safe handling and disposal.





The tables below present other solid wastes that are generated during the construction phase during the proposed gas connection project. It worth mentioning Construction wastes will be generated only during a relatively short period.

**Table 7-1 Handling of Solid Wastes during Construction Phase**

Waste Type	Description	Classification	Treatment and Disposal
<b>Excavated soil and excess sand</b>	Excess sand not used in construction, and excavated soil other than broken asphalt.	Non-Hazardous	Dispose to an approved non-hazardous waste disposal facility: <u>Abu Zaabal Landfill site east of El Hadtha area</u> (to be agreed with local unit)
<b>Metal - Scrap</b>	Includes sheet metal, piping, tubing, wire, cable, welding residue, valves, fittings, and vehicle and equipment parts.	Non-Hazardous	Disposal: - Preferred: Sell to scrap yard for recycling. - Alternative: Dispose to an approved non-hazardous waste disposal facility: <u>Abu Zaabal Landfill site east of El Hadtha area</u> (to be agreed with local unit)
<b>Paint Containers – Water Based</b>	Pails used for latex paint and paint related solvent containers.	Non-Hazardous	Dispose to an approved non-hazardous waste disposal facility. Which in is the <u>Abu Zaabal Landfill site east of El Hadtha area</u> (to be agreed with local unit)
<b>Paint Containers – Oil Based</b>	Pails used for oil based paints, solvents and paints that contain lead, silver, chromium or other toxic heavy metals.	Hazardous	Dispose to an approved hazardous waste disposal facility, Nasreya Hazardous Waste disposal Centre.
<b>Welding Rods</b>	Generated from piping welding. Remaining portions of used rods or unused but opened packaged.	Non-Hazardous	Dispose to an approved non-hazardous waste disposal facility. Which in this case <u>Abu Zaabal Landfill site east of El Hadtha area</u> (to be agreed with local unit)
<b>Concrete and bricks waste</b>	Excess liquid cement that not used in cementing operations, loose fragments of solidified cement , concrete debris from construction, and bricks waste	Non-Hazardous	Dispose to an approved non-hazardous waste disposal facility: <u>Abu Zaabal Landfill site east of El Hadtha area</u> (to be agreed with local unit)



Waste Type	Description	Classification	Treatment and Disposal
<b>Broken asphalt</b>	Streets excavation will produce broken asphalt	Non-Hazardous	Dispose to an approved non-hazardous waste disposal facility: <u>Abu Zaabal Landfill site east of El Hadtha area</u> (to be agreed with local unit)

**Table 7-2 Wastes Common for Construction of gas pipelines**

Waste Type	Description	Classification	Treatment and Disposal
<b>Possibly damaged asbestos water pipes during excavation</b>	Any waste material containing more than 1 wt% asbestos including piping/equipment/vehicle gaskets, pump packing brake pads, etc.	Hazardous	Dispose to an approved hazardous waste disposal facility: Nasreya Hazardous Waste Treatment Centre
<b>Batteries</b>	Scrap wet and dry cell batteries from vehicles and equipment.	Hazardous	- Preferred: Recycle - Alternative: Dispose to an approved hazardous waste disposal facility, Nasreya Hazardous Waste Treatment Centre.
<b>Contaminated Soil – Refined Fuel and Oil</b>	Contaminated soil from routine activities and minor accidental releases spills or leaks.	Hazardous	Dispose to an approved hazardous waste disposal facility Nasreya Hazardous Waste Treatment Centre.
<b>Domestic Waste</b>	Food waste, paper and packaging discarded from kitchens, living quarters, bathrooms, laundries, warehouses and offices.	Non-Hazardous	Dispose to an approved non-hazardous waste disposal facility. Which in this case <u>Abu Zaabal Landfill site east of El Hadtha area</u> (to be agreed with local unit)
<b>Filters – Lube Oil (Drained)</b>	Lube oil filters used to remove solids and impurities originating from vehicles, machinery and equipment maintenance and repair.	Hazardous	Disposal: - Filters - Dispose to an approved hazardous waste disposal facility Nasreya Hazardous Waste Treatment Centre. - Drained liquids - Manage same as Lubricating Oil
<b>Oil Containers – (Including Drums and Barrels)</b>	Drums and barrels used for bulk oils and lubricants.	Hazardous	Dispose to an approved hazardous waste disposal facility, Nasreya Hazardous Waste Treatment Centre.



Waste Type	Description	Classification	Treatment and Disposal
<b>Shop Towels (Not Laundered - Contaminated)</b>	Shop towels, rags, Nomex, and other cloth wipers that are contaminated with a hazardous waste or that exhibit a hazardous characteristic and are not commercially dry cleaned or laundered	Hazardous	Dispose to an approved hazardous waste disposal facility, Nasreya Hazardous Waste Treatment Centre.

Monitoring activities shall depend mainly upon observation of waste stockpiles of soil and construction waste to ensure the frequency of removal from site, and whether they contain hazardous components.

### 7.2.8 Management of Street Restoration after asphalt breaking

Standard protocols adhering to national/local administrative requirements are to be followed:

- Close and early coordination between the LDC (and the excavation contractor, if applicable), the local unit, and any other relevant authorities (in the case of public roads, the Roads and Bridges Directorate may become the counterpart to the LDC)
- Agreement on the restoration arrangements, schedules, fees, and payment schedules
- Coordination with the General Utilities before starting work especially the Traffic Department, sewerage, water, telephones and electricity departments.
- Payment of restoration fees by the LDC before works commencement
- Documentation of the agreement and adoption by all involved parties
- Communication with the Public and relevant authorities (such as the security and the traffic departments) regarding excavation and restoration plans

As mentioned in the impacts section of the study, restoration and re-pavement of streets post-construction and excavation is one of the impacts which are highly perceived by the public. The implementing entity agrees a restoration fee with the local administration unit in charge of the area. The fee is used by the local unit to include the restoration in their re-pavement plans. In some cases, the restoration and re-pavement job is carried out by the Roads and bridges directorate who, in turn, schedule the re-pavements in their own plans. A key to minimize public discontentment and socioeconomic impacts of excavated streets is quick restoration and effective communication with regarding work and restoration schedules.

### 7.2.9 Management of Community health and safety

In addition to all the environmental and social management and monitoring measures in this section which aim for health and safety, awareness-raising actions and signs should be provided to workers and community members to promote safety and health, safety supervisors should be hired by the LDCs to oversee work sites and they will be largely responsible for children and their safety around the construction site.

Following are some mitigation procedures to be adopted

- Using caution tapes that help to keep people away of the sit,
- Informing residents and shopkeepers about the timeline of the project (street by street) in order for the residents to know when to avoid certain streets



- A worker should support old people to cross the digging areas, especially, on the wooden bars

### **7.2.10 Management of occupational health and safety (OH&S)**

A comprehensive and practical occupational health and safety management system must be enforced. The OH&S measures are to comply with all relevant national legal requirements well as international Best Practice such as the IFC EHS General Guidelines. Practical and administrative measures should be taken by EGAS and the LDC to ensure adherence of site crews to OH&S procedures and measures; especially:

- Use of relevant Personal Protective Equipment at all times
- Special procedures for working at heights and working in confined spaces
- Earthing to prevent electric shock and fire hazards
- Defensive driving and operation of machinery, equipment, and vehicles
- Diligent reporting of incidents and “near-incidents” in order to take corrective steps
- Other OH&S measures, as detailed by the latest editions of the Egypt Gas HSE Manuals

### **7.2.11 Management of grievances (E&S Grievance Redress Mechanism)**

EGAS and the LDCs aim to be recognized as a responsible operator exemplary in the management of the impacts of its activities. As such, EGAS and the LDCs are committed to preventing, limiting and, if necessary, remedying any adverse impacts caused by its activities on local populations and their social and physical environment.

Identifying, preventing and managing unanticipated impacts are facilitated by a grievance redress mechanism (GRM). As the World Bank’s governance and anticorruption (GAC) agenda moves forward, grievance redress mechanisms (GRMs) are likely to play an increasingly prominent role in Bank-supported projects .Well-designed and -implemented GRMs can help project management significantly enhance operational efficiency in a variety of ways, including generating public awareness about the project and its objectives; deterring fraud and corruption; mitigating risk; providing project staff with practical suggestions/feedback that allows them to be more accountable, transparent, and responsive to beneficiaries; assessing the effectiveness of internal organizational processes; and increasing stakeholder involvement in the project. For task teams more specifically, an effective GRM can help catch problems before they become more serious or widespread, thereby preserving the project’s funds and its reputation<sup>16</sup>.

Effective grievance management helps to:

- Build trust through having a dialogue with stakeholders.
- Detect weak signal and propose solution.
- Reduce risk of conflict between the affiliate and local communities.
- Reduce risk of litigation by seeking fair solutions through mediation in the event of an established impact.

---

<sup>16</sup> <http://siteresources.worldbank.org/>

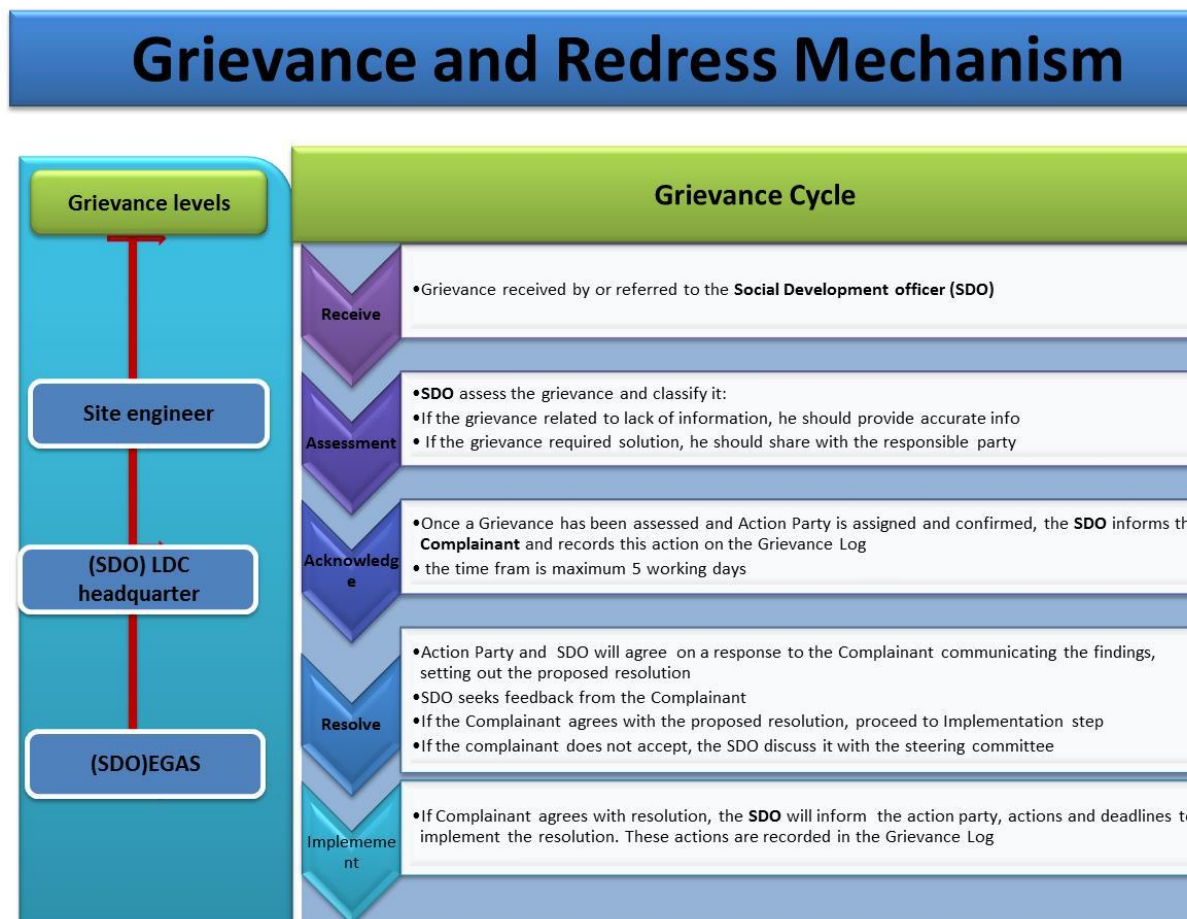


- Identify and manage unanticipated impacts of operation.
- Avoid delays to operations and additional costs.
- Avoid future impacts through analysis of weak signals.

The detailed grievance mechanism (GRM) below is to be shared with the community beneficiaries. Posters will be prepared and made available to the beneficiaries in the contracting office<sup>17</sup>. Additionally, they will be availed in the customer services office. Thus, sufficient and appropriate information about the GRM will be disseminated to the communities prior to the construction phase. Information dissemination about the GRM should be shared with the beneficiaries during the process of contracting and disclosed in the contracting office and other publically accessible venues. Following are the various stages of grievances.

The proposed mechanism is built on three tiers of grievances:

- 1- On the level of site engineer and the regional branch of **Egypt Gas** in El Hadtha
- 2- On the level of LDC headquarter
- 3- On the level of EGAS



<sup>17</sup> Falls under the budget of the LDCs





## Figure 7-1 Proposed Grievance and Redress Mechanism

### *First tier of grievances*

In order to ensure high level of responsiveness to the local communities, it is essential to ensure that a local grievance mechanism is functioning and that the communities are aware of it. **Egypt Gas** will assign a Social Development Officer (SDO) (can be more than one) who will be working closely with the assigned SDO of EGAS. It is the responsibility of **Egypt Gas** SDO to ensure that the GRM system is widely known and well explained on the local level. Moreover, s/he will follow up on the complaint until a solution is reached. The turnaround time for the response/resolution should be 10 days and the complainant should know that he/she should receive response by then.

The grievances should be presented to the following:

- The foreman working on the ground in El Hadtha,
- The project manager in El Hadtha,
- The regional department of **Egypt Gas** in Qalubia Governorate

It is worth noting that most of the previous experience of EGAS is suggesting that complaints are usually handled efficiently and resolved on the local level. However, the management of the complaints including level of responsiveness, providing feedback and the documentation of the complaints needs to be significantly strengthened. In case the problem is not solved, the complainant may reach out to the second level of grievance.

### *Second tier of grievances:*

If the aggrieved person is not satisfied with the decision of the first tier, they can present the case to **Egypt Gas** headquarter. Complaint form is attached in Annex 5. SDO where they should provide resolution within 15 days, following is the second level of grievances:

1. The Social Development Officer in **Egypt Gas** headquarter will handle technical, environmental and land acquisition complaints. **Egypt Gas** headquarter SDO should receive the unsolved problems. Thereafter, the SDO gets in contact with the petitioner for more information and forwards the complaint to the implementing entities for a solution.
2. The SDO should follow the complaints and document how they were solved within **15** days.
3. The SDO should update the complainant on the outcome of his/her complaint.

### *Third tier of grievances:*

If the aggrieved person is not satisfied with the decision of the SDOs of **Egypt Gas** at Stage 2, they can present the case to EGAS SDO where they should provide resolution within 15 days. The following section presents the third level of grievances:

1. The Social Development Officer in EGAS will handle technical, environmental and land acquisition complaints. He should receive the unsolved problems. Thereafter, they get in contact with the petitioner for more information and forwards the complaint to the implementing entities for a solution.



2. The SDO should follow the complaints and document how they were solved within **15** days.
3. The SDO should update the complainant on the outcome of his/her complaint.

### ***Grievance channels***

Due to the diversity of the context in different Governorates and the socioeconomic characteristics of the beneficiaries, the communication channels to receive grievances were locally tailored to address all petitioners concerns and complaints. The following are the main channels through which grievances will be received:

1. Foremen act as the main channel for complaints. They are always available on the construction sites. However, complaints raised to him/her are mostly verbal. Thus, s/he should document all received grievances in writing form using a fixed serial number that the complainant should be informed about to be able to follow up on the complaint
2. Hotline: 129 is the hotline in **Egypt Gas**.
3. The SDO of Egypt Gas and EGAS
4. Trustworthy people, community leaders and NGOs/CDA's will be an appropriate channel to guide petitioner about the various tiers of grievances, particularly, in rural areas.

### ***Response to grievances***

Response to grievance will be through the following channels

1. The response to grievances should be through an official recognized form to ensure proper delivery to the complainant. It is the responsibility of the SDOs to ensure that complainants were informed about the results of handling their complaints.
2. Response to grievances should be handled in timely manner as mentioned above, thereby conveying a genuine interest in and understanding of the worries put forward by the community.
3. EGAS and **Egypt Gas** should maintain record of complaints and results.

### ***Monitoring of grievances***

All grievances activities should be monitored in order to verify the process. The monitoring process should be implemented on the level of EGAS and the LDC. The following indicators will be monitored:

Monitoring dimensions	Means of verification and indicators
<b>GRM is fully operational</b>	<ul style="list-style-type: none"> <li>○ Number of received grievances monthly (Channel, gender, age, basic economic status of the complainants should be mentioned)</li> <li>○ Type of grievance received (according to the topic of the complaint)</li> <li>○ Documentation efficiency</li> </ul>



<b>Efficiency of responses and corrective procedures</b>	<ul style="list-style-type: none"><li>○ Number of grievances solved and closed</li><li>○ Feedback offered to the grievances</li><li>○ Number of unsolved grievances and the reasons behind not solving them</li><li>○ Time consumed to solve the problem</li></ul>
<b>Efficiency of information sharing about GRM</b>	<ul style="list-style-type: none"><li>○ Dissemination activities undertaken</li><li>○ Total number of brochures distributed (if any)</li><li>○ Total number of awareness meetings conducted (if any)</li></ul>



---

### ***Institutional Responsibility for the Grievances***

The entity responsible for handling grievances will mainly be the Environmental Affair Department within the implementing agency (EGAS). The Social Development Officer (SDO) working within EGAS in cooperation with the **Egypt Gas** will address all grievances raised by community members. The main tasks related to grievances of the SDOs on the various levels are:

1. Raise awareness about channels and procedures of grievance redress mechanisms
2. Collect the grievances received through different communication channels
3. Document all received grievances
4. Transfer the grievance to the responsible entity
5. Follow up on how the problem was addressed and solved
6. Document, report and disseminate the outcome of received grievances
7. Ensure that each legitimate complaint and grievance is satisfactorily resolved by the responsible entity
8. Identify specific community leaders, organizations and citizen groups required to enhance the dialogue and communication through a public liaison office to avoid or limit friction and respond effectively to general concerns of the community
9. Monitoring grievance redress activities



### 7.3 Environmental and Social Management Matrix during CONSTRUCTION

Table 7-3: Environmental and Social Management Matrix during CONSTRUCTION

Receptor	Impact	Mitigation measures	Responsibility		Means of supervision	Estimated Cost
			Mitigation	Supervision		
<b>Local traffic and accessibility</b>	<b>Traffic congestion</b> (and associated noise/air emissions)	Excavation during off-peak periods	Excavation contractors	- LDC + - Traffic department	Contractor has valid conditional permit + Field supervision	Contractor costs  LDC management costs
		Time limited excavation permits granted by local unit & traffic department				
		Announcements + Signage indicating location/duration of works prior to commencement of work	- LDC - Excavation contractors	- LDC HSE - Local Unit - Traffic department	Ensure inclusion in contract + Field supervision	
		Apply Horizontal Directional Drilling under critical intersections whenever possible to avoid heavy traffic delays	Contractor	LDC HSE	Field supervision	
		Traffic detours and diversion	Traffic Department	Traffic Department	Field supervision for detouring efficiency Complaints received from traffic department	Additional budget not required
Road restructuring and closing of lanes			Fluidity of traffic flow			
<b>Ambient air quality</b>	<b>Increased emissions of dust and gaseous pollutants</b>	Controlled wetting and compaction of excavation/backfilling surrounding area	Excavation Contractor	LDC HSE	Contractual clauses + Field supervision	- Contractor costs - LDC management costs
		Isolation, covering, transportation in equipped vehicles and disposal of stockpiles			Contractual clauses + Field supervision	





Receptor	Impact	Mitigation measures	Responsibility		Means of supervision	Estimated Cost
			Mitigation	Supervision		
		Compliance to legal limits of air emissions from all relevant equipment			Measure and document emissions of machinery by regular audits request emission measurements	
		<ul style="list-style-type: none"> <li>- Availability of 24-7 hotline service (129) to all beneficiaries and the public for reporting possible leaks, damages or emergencies</li> <li>- Quick response to gas leaks by evacuation of the affected area</li> <li>- Repair or replacement of failed component</li> </ul>	LDC	LDC HSE	Field Supervision	
<ul style="list-style-type: none"> <li>- Ambient noise levels</li> <li>- Local community</li> <li>- Workers</li> </ul>	Increased noise levels beyond WB/National permissible levels	Ear muffs, ear plugs, certified noise PPE for workers  Avoid noisy works at night whenever possible	<ul style="list-style-type: none"> <li>- LDC</li> <li>- Excavation Contractor</li> </ul>	LDC HSE	Contractual clauses + Field supervision (audits)  Field supervision Complaints receipt from local administration	<ul style="list-style-type: none"> <li>- Contractor costs</li> <li>- LDC management costs</li> </ul>
<ul style="list-style-type: none"> <li>- Ground utilities' integrity</li> <li>- Local community</li> </ul>	Damage to underground utilities resulting in water/wastewater leaks, telecommunicati	Coordination with departments of potable water, wastewater, electricity, and telecom authorities to obtain maps/ data on underground utilities, whenever available	Excavation Contractor	LDC HSE	Official coordination proceedings signed by representatives of utility authorities <ul style="list-style-type: none"> <li>- Examination of site-</li> </ul>	<ul style="list-style-type: none"> <li>- Contractor management costs</li> <li>- LDC management costs</li> </ul>



Receptor	Impact	Mitigation measures	Responsibility		Means of supervision	Estimated Cost
			Mitigation	Supervision		
	<b>on and electricity interruptions</b>				specific reports and records – Field supervision	
		If maps/data are unavailable: Perform limited trial pits or boreholes to explore and identify underground utility lines using non-intrusive equipment		LDC HSE Supervisor	– Contractual clauses + Field supervision	
		Preparation and analysis of accidental damage reports		LDC HSE	– Review periodic HSE reports	
		Repair and rehabilitation of damaged components		LDC HSE Local Government Unit Local Police	– Contractual clauses + Field supervision	
– Streets (physical status) – local community and workers (health and safety)	<b>Hazardous waste accumulation</b>	<ul style="list-style-type: none"> <li>– Temporary storage in areas with impervious floor</li> <li>– Safe handling using PPE and safety precautions</li> <li>– Transfer to LDC depots for temporary storage</li> <li>– Disposal at licensed Alexandria hazardous waste facilities (Nasreya or UNICO)</li> <li>– Hand-over selected oils and lubricants and their containers to a specialized company for recycling</li> </ul>	<ul style="list-style-type: none"> <li>– LDC</li> <li>– Excavation</li> <li>– Contractor</li> </ul>	LDC HSE	Field supervision and review of certified waste handling, transportation, and disposal chain of custody	Indicative cost items included in contractor bid: Chemical analysis of hazardous waste Trucks from licensed handler Pre-treatment (if needed) Disposal cost at Nasreya  Approximate cost of the above (to be revised upon project execution):



Receptor	Impact	Mitigation measures	Responsibility		Means of supervision	Estimated Cost
			Mitigation	Supervision		
						8,000-10,000 LE per ton
		<ul style="list-style-type: none"> <li>- Adequate management of asbestos and any possible hazardous waste</li> </ul>	Water Authority + contractor		Field supervision + review of Water Authority manifests	<ul style="list-style-type: none"> <li>- Contractor costs</li> <li>- LDC management costs</li> </ul>
		<ul style="list-style-type: none"> <li>- Minimize fueling, lubricating and any activity onsite that would entail production of hazardous materials empty containers</li> <li>- Pre-Plan the anticipated amounts of hazardous liquid materials (such as paint, oils, lubricants, fuel) to be used in the various activities in order to minimize leftovers and residuals.</li> <li>- To the extent practical, seek to combine leftovers or residuals of the same liquid material/waste in order to minimize the number of containers containing hazardous residuals</li> <li>- Ensure hazardous liquid material/waste containers are always sealed properly and secured from tipping/falling/damage/direct sunlight during transportation and storage</li> <li>- In case of spillage:               <ul style="list-style-type: none"> <li>o avoid inhalation and sources of ignition</li> </ul> </li> </ul>	<ul style="list-style-type: none"> <li>- LDC</li> <li>- Excavation</li> <li>- Contractor</li> </ul>		Field supervision	



Receptor	Impact	Mitigation measures	Responsibility		Means of supervision	Estimated Cost
			Mitigation	Supervision		
		<ul style="list-style-type: none"> <li>○ cover and mix with sufficient amounts of sand using PPE</li> <li>○ collect contaminated sand in clearly marked secure containers/bags</li> <li>– Add sand to inventory of hazardous waste</li> </ul>				
Local community	Non-hazardous waste accumulation	<ol style="list-style-type: none"> <li>1. Designate adequate areas on-site for temporary storage of backfill and non-hazardous waste</li> <li>2. Segregate waste streams to the extent possible to facilitate re-use/recycling, if applicable</li> <li>3. Reuse non-hazardous waste to the extent possible</li> <li>4. Estimate size of fleet required to transport wastes.</li> <li>5. <b><u>Transfer waste to disposal facility East of the project area</u></b></li> </ol>	<ul style="list-style-type: none"> <li>– LDC</li> <li>– Excavation Contractor</li> </ul>	LDC HSE	<ul style="list-style-type: none"> <li>– Contractual clauses</li> <li>– Monitoring of waste management plan</li> <li>– Field supervision</li> </ul>	<ul style="list-style-type: none"> <li>– Contractor costs</li> <li>– LDC management costs</li> </ul>
Local community	Destruction of streets and pavement	<ul style="list-style-type: none"> <li>– Arrange Restoration and re-pavement (رد الشئ لأصله) with local unit</li> <li>– Communication with local community on excavation and restoration schedules.</li> </ul>	<ul style="list-style-type: none"> <li>– LDC in cooperation with the LGU</li> </ul>	EGAS	<ul style="list-style-type: none"> <li>- Field supervision</li> <li>Coordination with LGU as needed</li> </ul>	Included in re-pavement budget agreed by LDC with local units or Roads and Bridges Directorate
Occupational health and safety	Health and safety	<ol style="list-style-type: none"> <li>1. Full compliance to EGAS and LDC HSE requirements, manuals, and actions as per</li> </ol>	<ul style="list-style-type: none"> <li>Excavation Contractor</li> </ul>	LDC HSE and EGAS SDO	<ul style="list-style-type: none"> <li>Field supervision</li> </ul>	<ul style="list-style-type: none"> <li>– Contractor costs</li> </ul>



Receptor	Impact	Mitigation measures	Responsibility		Means of supervision	Estimated Cost
			Mitigation	Supervision		
		<p>detailed manuals developed by Egypt Gas</p> <p>2. Ensure the provision of the appropriate personal protective Equipment and other equipment needed to ensure compliance to HSE manuals</p>				<p>– LDC management costs</p>
<b>Local communities and businesses</b>	<b>Lack of accessibility to businesses due to delay in street rehabilitation</b>	<p>Compliance with the Environmental management plan concerning timely implementation of the construction schedule to minimize impact on local business</p> <ul style="list-style-type: none"> <li>• Follow up the procedure of Grievance Redress Mechanism</li> <li>• Ensure transparent information sharing</li> </ul>	<p>During digging process</p> <p>LDC</p> <p>The sub-contractors</p>	LDC and EGAS SDO	<ul style="list-style-type: none"> <li>– Ensure the implementation of GRM</li> <li>– Supervision on Contractors performance</li> </ul>	No cost
<b>Local community Health and safety</b>	<b>Threat to Safety of users and houses (due to limited level of awareness and misconceptions)</b>	<p>Prepare Citizen engagement and stakeholder plan</p> <p>Awareness raising campaigns should be tailored in cooperation with the community-based organizations</p>	<p>During the construction</p> <p>LDC</p>	LDC and EGAS SDO	<ul style="list-style-type: none"> <li>– List of awareness activities applied</li> <li>– Lists of participants</li> <li>– Documentation with photos</li> <li>– Awareness reports</li> </ul>	<ul style="list-style-type: none"> <li>– 2250 \$ per awareness raising campaign</li> <li>– 2250 \$ for brochure and leaflets to be distributed (material available by EGAS-\$ spent)</li> </ul>







## 7.4 Environmental and Social Monitoring Matrix during CONSTRUCTION

Table 7-4: Environmental and Social Monitoring Matrix during CONSTRUCTION

Receptor	Impact	Monitoring indicators	Responsibility of monitoring	Frequency of monitoring	Location of monitoring	Methods of monitoring	Estimated Cost of monitoring
<b>Local traffic and accessibility</b>	Reduction of traffic flow and accessibility to local community	Comments and notifications from Traffic Department	LDC HSE	Monthly during construction.	Construction site	Documentation in HSE monthly reports Complaints log	LDC management costs
<b>Ambient air quality</b>	Increased air emissions	HC, CO% and opacity	LDC HSE	Once before construction + once every six months for each vehicle	Vehicles licensing Department	Measurements and reporting of exhaust emissions of construction activities machinery  Complaints log	LDC management costs
<b>Ambient noise levels</b>	Increased noise levels	Noise intensity, exposure durations and noise impacts	LDC HSE	Regularly during site inspections and once during the night in every residential area or near sensitive receptors such as hospitals	Construction site	Measurements of noise levels Complaints log	LDC management costs
		Complaints from residents	LDC HSE	Monthly during construction.	Construction site	Documentation in HSE monthly reports	LDC management costs



Receptor	Impact	Monitoring indicators	Responsibility of monitoring	Frequency of monitoring	Location of monitoring	Methods of monitoring	Estimated Cost of monitoring
<b>Underground utilities</b>	Damages to underground utilities and infrastructure	Official coordination reports with relevant authorities Accidents documentation	LDC HSE	Monthly during construction.	Construction site	Documentation in HSE monthly reports	LDC management costs
<b>Physical state of street</b>	Waste generation	Observation of accumulated waste piles	LDC HSE	During construction. Monthly reports	Construction site	Observation and documentation	LDC management costs
		Observation of water accumulations resulting from dewatering (if encountered)	LDC HSE	During construction. Monthly reports	Around construction site	Observation and documentation	LDC management costs
		Chain-of-custody and implementation of waste management plans	LDC HSE	Zonal reports	Construction site and document examination	Site inspection and document inspection	LDC management costs
<b>Local community</b>	Damaging to the streets	<ul style="list-style-type: none"> <li>- Streets quality after finishing digging</li> <li>- Number of complaints due to street damage</li> </ul>	LDC, EGAS	Four times per year, each three months	Site and Desk work	Checklists and complaints log	No cost
<b>Local community</b>	Threat to Safety of users and houses (due to limited level of awareness and misconceptions)	<ul style="list-style-type: none"> <li>- Number of awareness raising implemented</li> <li>- Number of participants in information dissemination</li> </ul>	LDC, EGAS	Quarterly monitoring	Office	Reports Photos Lists of participants	No cost



## **7.5 Management of Mitigation and Monitoring activities During Operation Phase**

---

### **7.5.1 Hotline**

As mentioned previously, odorant is added to odorless natural gas to facilitate leakage detection by smell/odor. A 24-7 Hotline (129) is available for customers and the public to report leaks, damage, emergencies, and/or incidents related to gas connections, components, infrastructure, and activities (inside or outside households) and to request repairs/emergency response/assistance.

### **7.5.2 Community health and safety**

Several measures are suggested to overcome obstacles to full understanding and adoption of safety measures by the clients in the social management plan. Examples include using drawings instead of written instructions to improve communication with illiterate customers, coordinating with women of local NGOs who are interested in cooperating with the project to explain safety precautions to women in the households to be connected, and constantly monitoring the performance of emergency response units. During all consultation activities conducted, participating NGOs offered to host awareness activities related to the NG project. In **Qalubia**, various NGOs were interviewed. They expressed their willingness to act actively as awareness centers for the project. Consequently, such activities will not necessitate additional cost

The LDC must communicate clear instructions to clients in order to ensure that NG piping and components (both inside the household and outside) are not be altered, violated, or intruded upon in any way without written approval from, or implementation of the alteration by, the LDC.

### **7.5.3 Management of Repairs and Maintenance**

The same mitigation and monitoring measures discussed for the construction phase shall also apply to the repair and maintenance works that will require excavation.

### **7.5.4 Management of network integrity**

Rare events may threaten the integrity of the network and cause multiple failures/leaks/fires/explosions simultaneously should be addressed, despite their low occurrence probability. Such events may include the unlikely impacts from earthquakes, unexpected geotechnical settlements, and pipeline sabotage. Mitigation should involve review of geological/geotechnical history and vulnerabilities. Other measures include an emergency action plan and training drills to deal with such events with minimal damage and risk to the public.

Basic emergency response actions in case of leakage or network damage:

- Mobilization of emergency response team to cut gas supply to affected area or divert the gas supply whenever required
- Quick coordination with civil defense, police, and other relevant local authorities whenever necessary
- Creation of an exclusion zone around the affected area where vehicles and people are moved out of the danger zone
- Using local announcement systems and local community leaders to inform residents, businesses, and people in and around the affected area that a leakage has occurred
- Removing all possible sources of ignition in the affected area
- Damage Repair under strict H&S precautions
- Re- operation



### **7.5.5 Management of financial disturbance**

Residential gas connection installation costs are around 5,600 EGP<sup>18</sup>. Customers pay 1700 EGP of that cost in cash. The balance is subsidized by the government of Egypt. The 1700 EGP can be made either upfront or in installments over a period of time. If they pay in installment, the interest rate will added in accordance to the selected installment scheme.

Typically, households opt for flexible monthly payment plans facilitated by the LDCs and local banks. Limited number of NGOs also provided financial assistance for installing gas connections for households in very low income neighborhoods.

The government of Egypt does not provide additional subsidy to the poorer groups, However, they provide number of payments strategies through offering the various installments schemes<sup>19</sup>: It is worth mentioning that the Government of Egypt try to negotiate with funding agencies to provide extra support to poor.

---

<sup>18</sup> *Converting Households from LPG to Natural Gas- Social Impact Assessment Study- 2013*

<sup>19</sup> In case of any change of the value of NG installation those installment might be changed



## 7.6 Environmental and Social Management Matrix during OPERATION

Table 7-5: Environmental and Social Management Matrix during OPERATION

Receptor	Impact	Mitigation measures	Responsibility		Means of supervision	Estimated Cost
			Mitigation	Supervision		
<ul style="list-style-type: none"> <li>- Ambient air quality</li> <li>- Community health and safety</li> </ul>	<p><b>Network integrity</b></p>	<ul style="list-style-type: none"> <li>- Detailed review of the geotechnical and geological history of the project area</li> <li>- Development of a full emergency response plan with at least the following actions               <ul style="list-style-type: none"> <li>o Mobilization of emergency response team to cut gas supply to affected area or divert the gas supply whenever required</li> <li>o Quick coordination with civil defense, police, and other relevant local authorities whenever necessary</li> <li>o Creation of an exclusion zone around the affected area where vehicles and people are moved out of the danger zone</li> <li>o Using local announcement systems and local community leaders to inform residents, businesses, and people in and around the affected area that a leakage has occurred</li> <li>o Removing all possible sources of ignition in the affected area</li> </ul> </li> </ul>	LDC	LDC HSE.	<ul style="list-style-type: none"> <li>- Map and local geotechnical report review</li> <li>- Site inspections</li> <li>- Awareness actions</li> <li>- Periodical trainings and drills</li> </ul>	LDC management costs





Receptor	Impact	Mitigation measures	Responsibility		Means of supervision	Estimated Cost
			Mitigation	Supervision		
		<ul style="list-style-type: none"> <li>○ Damage Repair under strict H&amp;S precautions</li> <li>○ Re- operation</li> <li>– Random inspections and awareness campaigns to ensure that NG piping and components (both inside the household and outside) are not be altered, violated, or intruded upon in any way without written approval from, or implementation of the alteration by, the LDC.</li> <li>– Availability of 24-7 hotline service (129) to all beneficiaries and the public for reporting possible leaks, damages or emergencies</li> <li>– Quick response to gas leaks by evacuation of the affected area</li> <li>– Repair or replacement of failed components</li> </ul>				
<ul style="list-style-type: none"> <li>- Ambient air quality</li> <li>- Community health and safety</li> </ul>	<b>Repairs and maintenance (network and households)</b>	As with construction phase activities	<ul style="list-style-type: none"> <li>– LDC</li> <li>– Excavation Contractor</li> </ul>	LDC HSE	As relevant from construction phase	LDC management costs
<b>Economically disadvantaged Community members</b>	<b>Financial burden on economically disadvantaged due to the installments</b>	<ul style="list-style-type: none"> <li>- The designated company for bill company should collect the installment immediately after the installation of NG</li> <li>- The installments should be collected on monthly basis in order not to add burden to the</li> </ul>	The company responsible for collecting the consumption fees and the installments	EGAS	Banks loans log Complaints raised by poor people due to the frequency of collecting the installments	No cost



Receptor	Impact	Mitigation measures	Responsibility		Means of supervision	Estimated Cost
			Mitigation	Supervision		
		<p>poor, as it will be easier for them to pay on monthly basis</p> <ul style="list-style-type: none"> <li>- The installment should not be high</li> </ul>				
<b>Informal LPG distributors</b>	<b>Loss of revenue for LPG distributors</b>	<ul style="list-style-type: none"> <li>- LPG distributors should be informed about the NG potential areas in order to enable them to find alternative areas</li> <li>- They should be informed about the GRM in order to enable them to voice any hardship</li> </ul>	LPG Distribution Company /LDC	EGAS	Information sharing activities with the LPG vendors Grievances received from them	No cost
<b>Community health and safety</b>	<b>Possibility of Gas leakage</b>	<ul style="list-style-type: none"> <li>- Information should be provided to people in order to be fully aware about safety procedures</li> <li>- The hotline should be operating appropriately</li> <li>- People should be informed of the Emergency Numbers</li> </ul>	LDC	LDC	Complaints raised due to Gas leakage	No cost



## 7.7 Environmental and Social Monitoring Matrix during OPERATION

Table 7-6: Environmental and Social Monitoring Matrix during OPERATION

Impact	Monitoring indicators	Responsibility of monitoring	Monitoring Frequency	Location of monitoring	Methods of monitoring	Monitoring Estimated Cost
<b>Network integrity</b>	<ul style="list-style-type: none"> <li>- Earthquakes or geotechnical settlements</li> <li>- Emergency response time and corrective actions during emergency drills</li> <li>- Reports of alteration or tampering with ANY gas components</li> </ul>	LDC HSE	Bi-annual inspections and annual emergency response drills	Along the network and inside and outside households	- Inspection, leakage detection, running the drills	LDC management costs
<b>Financial burden on economically disadvantaged due to the installments</b>	<ul style="list-style-type: none"> <li>- Number of economically disadvantaged people who complained</li> <li>- Number of those who can't pay the installment</li> </ul>	LDC and EGAS	Quarterly	Desk work	<ul style="list-style-type: none"> <li>- Complaints log</li> <li>- Bank reports</li> <li>- Bill collection company reports</li> </ul>	No cost
<b>Impact on the informal LPG distributors</b>	<ul style="list-style-type: none"> <li>- Grievance received from the informal LPG distributors</li> <li>- Information shared with them</li> </ul>	EGAS, LDC	Quarterly	Desk work	- Complaints log	No cost
<b>Possibility of Gas leakage</b>	<ul style="list-style-type: none"> <li>- Complaints raised by the community people</li> <li>- Number of leakage accidents reported/raised</li> </ul>	LDC, EGAS	Four times per year, each three months	Site and Desk work	Complaints log LDC	No cost



## **7.8 Reporting of Mitigation and Monitoring Activities**

---

LDC HSE Departments are to prepare monthly and quarterly reports to be submitted to EGAS Environment Department during the construction phase.

### **During construction phase monthly reports should include as a minimum:**

- Conditional permits and any comments or recommendations by Traffic Department and Supreme Council for Antiquities
- Number and date of paint cans shipped to company depot or returned to supplier
- Evaluation of LDC and contractor's performance on applying his relevant mitigation measures
- Any accidents or breaking of utility pipes
- Monitoring results of excavation machinery exhaust emission, noise and vibrations
- The number of complaints received and how they were dealt with
- Communication and information sharing activities done by the LDC on the field

### **During Operation phase monthly reports should include as a minimum:**

- Evaluation of the adherence of staff to safety measures
- Pipeline leakage or damage incidents
- The number of complaints received and how they were dealt with



## 7.9 Institutional Framework for ESM&MP Implementation

### 7.9.1 Environmental Management Structures

EGAS is the supervisory body. **Egypt Gas** is the implementing body. Below is the management structure of **Egypt Gas**.

Being the implementing body of the natural gas network in project areas, **Egypt Gas** has a direct involvement with the environmental management and monitoring of the natural gas network. **Egypt Gas** has limited environmental and social background. They will be in need to upgrade their capacity regarding the environmental and social aspects. EGAS will provide **Egypt Gas** staff with the needed information.

One of the standard tasks of the HSE Departments of **Egypt Gas**, supervised by EGAS, is to ensure that the Environmental and Social Management Plan of the project is implemented in all the phases of the Project.

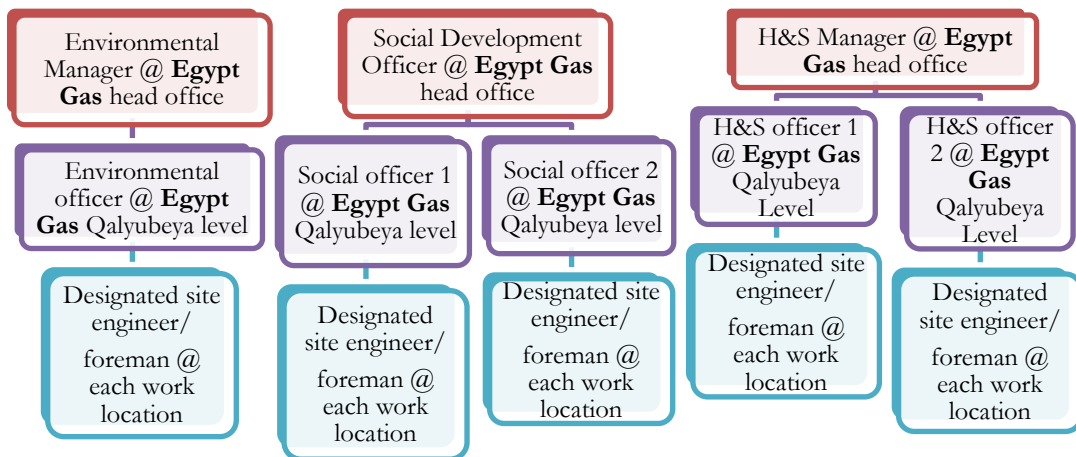


Figure 7-2: Egypt Gas ESMP organogram



### 7.9.2 Roles and responsibilities of EGAS and LDCs Environmental and H&S Officers

In the structure above, designated site engineers/foremen perform daily implementation, monitoring and reporting of activities as per the ESMP with special attention to:

1. Worker and contractor compliance to EGAS HSE manuals and procedures
2. Occurrence of HSE incidents and suggestions for incident avoidance
3. Management of broken asphalt (if any), unused backfill, solid waste, metal scrap
4. Management of paint cans, refueling & lubrication, soil contamination
5. Management of liquid waste such as leaked condensate hydrocarbons (if any) or chemicals used in heaters; and
6. Checking that handling of hazardous waste is done according to the requirements of the Environmental Law, where a permit for handling hazardous material and Hazardous wastes is issued from EGAS Environment Department
7. Using analyzers to measure noise, SO<sub>2</sub>, CO, CH<sub>4</sub> and NO<sub>2</sub> in ambient air, and detect possible natural gas leaks
8. Other tasks as outlined in ESM&MP

Daily reports are to be compiled and sent to the governorate H&S and Environmental officers for preparation of monthly summary reports.

Monthly reports are sent to H&S and Environmental officer at **Egypt Gas** head office for compilation into quarterly reports to EGAS.

### 7.9.3 Roles and responsibilities of EGAS and LDCs Social Development Officers

EGAS, its subsidiary Local Distribution Companies (LDCs), and the contractors will be responsible for adopting the following procedures:

#### ***Compliance with Bank safeguards***

- Preparing internal guidelines for the preparation, implementation, monitoring and reporting of social documents required by various safeguard instruments;
- Reviewing, as applicable, ESMP and other social safeguard documents prepared by consultants to ensure compliance with relevant safeguard policies of the government and the World Bank;
- Providing recommendations to EGAS/LDC management and other subsidiary companies accordingly and make necessary changes prior to submission of relevant social documents to the World Bank – ensure consistency in the level of proficiency and presentation of the documentation;
- Carrying out documentation review pertaining to social compliance (including bidding documents, reviews on-site, reports from contractors etc.) throughout project implementation;
- Coordinating and facilitating the work of consultants engaged to carry out environmental and social impact assessments and resettlement planning and external monitoring of safeguard instruments implementation;
- Organizing the technical aspects of workshops and meetings as required, as outlined in the ESMF/RPF training and capacity building section;





- Preparing training materials, and conducting technical training workshops to EGAS/LDC staff and project implementation agencies on social safeguards requirements.

### ***Monitoring and reporting***

- Conducting internal monitoring of the implementation of the social component of the ESMP in matters pertaining to timely payments and the provision of temporary measures to affected persons;
- Contributing to project progress reports pertaining to overall implementation of social requirements of the project;

### ***Communication with and responsiveness to targeted communities***

- Design community friendly grievance redress mechanism with clear and timely bound tiers and responsibilities and ensure dissemination on the local level.
- Conducting field visits to ensure that the established grievance redress mechanisms are functioning properly and that the individual projects are implemented in a socially sustainable manner;
- Participate in the process of disbursing compensations and keep track record of the compensation process documentation
- Reach out to local communities, including PAPs, to raise awareness about the project and the implementation schedule.
- Build the capacity and provide support to the field staff as needed.

#### **7.9.4 Required Actions**

Existing Environmental and social guidelines & practices of EGAS and its LDCs are following sound environmental procedures in the operation phase. EGAS is also working to institutionalize the social management in their practices and day to day business. A ministerial decree was issued in November 2015 with the effect of establishing a social unit within EGAS to affiliate to the Environmental Management Unit. The social unit currently has 3 staff mapped officially to the unit (although support is also provided by other team members). EGAS assigned team is benefiting from number of capacity building activities to enable them to carry out their social management mandates in an efficient manner.

- 1- Deeper involvement of environmental and social officers during the design, costing, tendering, and construction phases would be advantageous.
- 2- Specifically, **Egypt Gas** should take steps to develop capacity of site engineers/foremen and HSE officers with specific courses focused on implementation of the ESMP detailed in this ESIA as well as Egypt Gas detailed HSE guidelines (Latest version: 2015).



## 8 Stakeholder Engagement and Public Consultation

The public consultation chapter aims to highlight the key consultation and community engagement activities that took place as part of the preparation of the ESIA's and their outcomes.

The consultation activities used multiple tools and mechanisms (including scoping meetings, interviews, surveys, focus group discussions, and public hearings/consultations) with various stakeholders and community people in the host communities. These multiple-approach stakeholder activities were held for the proposed 1.5 million household NG connections project in compliance with:

- WB policies and directives related to disclosure and public consultation, namely,
  - o Directive and Procedure on Access to Information
  - o World Bank Operational Policy (OP 4.01)
- Egyptian regulations related to the public consultation
  - o The environmental law No 4/1994 modified by Law 9/2009 modified with ministerial decrees no. 1095/2011 and no. 710/2012

Objectives of various consultation activities are summarized as follows:

- 1- Define potential project stakeholders and identify their possible project roles
- 2- Disseminate comprehensive information about the project to enable stakeholders to identify their concerns, needs, and recommendations.
- 3- Document stakeholder feedback on the defined impacts as well as the social and environmental management plan and enhance the ESIA accordingly
- 4- Identify the most effective outreach channels that support continuous dialogue with the community
- 5- Discuss potential resettlement plans and impacts of involuntary resettlement (in the places where this is applicable).

### 8.1 Defining the stakeholder

In order to ensure an inclusive and meaningful consultation process, a stakeholders analysis was conducted to get better understanding of the various groups and their roles, interests and influence on the project. Full list of the stakeholders on the governorate level is included in the framework of the ESIA. For the purpose of this site specific ESIA, a focused stakeholders' identification was conducted to identify the key groups of relevance to the project in this specific location. The main identified groups are very similar to those identified on the governorate level but on a smaller scale. In the meantime, local communities of both men and women of projects beneficiaries as well as the PAPs, local NGOs/CDAs were among the key stakeholders on the local level.

The abovementioned stakeholders were consulted using various tools (i.e. individual interviews, group meetings and public consultation). Some of them have attended the public consultation hearings conducted in the 10<sup>th</sup> of February 2016 in Qalyoubia governorate. However, some of them were interviewed in their premises in order to enable them to spell out their concerns and worries freely.



## 8.2 Consultation Methodology and Activities

The consultation process was a dynamic and evolving process which adapted multiple qualitative and quantitative tools and was tailored to the local culture and context of the communities. The consultation was also a good chance for the team of EGAS and the LDCs to have direct interaction with the local communities and helped in establishing channel of communication and trust.



Figure 8-1: Group discussion



Figure 8-2: Meeting in front of house

The team applied various consultation activities. This included, but was not limited to, public consultation on the governorate level, as well as, scoping meetings, in-depth and household interviews and focus groups discussions on El Hadtha area level. It is worth noting that intense consultation were conducted during the process of preparing the ESIAF and the RPF in December 2013 (please see the ESIAF). All those activities helped to ensure that the consultation went as an ongoing process that aimed to set a foundation for future community engagement activities as part of the project.

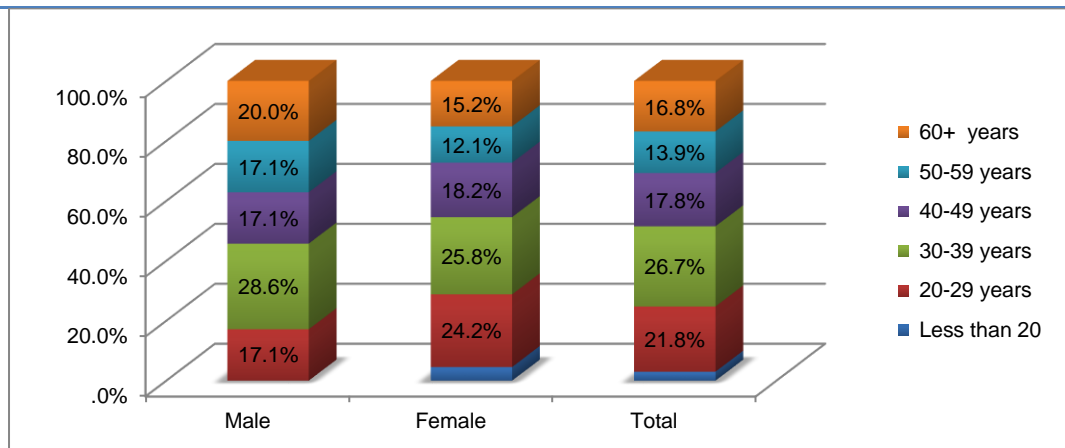
Table 8-1: Summary of Consultation Activities in El Hadtha

Participants	Number		Methods	Date
	Male	Female		
Government officials	3	1	In-depth	January 2016
Health centers	2			
NGOs	2		In-depth	
Community people	7	7	FGD	
Community people	66	35	Structured questionnaire	
LPG vendors	2			
Public hearing for the ESIA of the governorate level. Potential beneficiaries, government officials, NGO representatives, (10 people have attended from El Hadtha)	64	19	Public consultation	10 <sup>th</sup> of February 2016
<b>Total</b>	<b>146</b>	<b>62</b>		

The study team exerted effort to engage various age categories from males and females. Additionally, they were consulted in their own houses. This enabled them to talk freely.



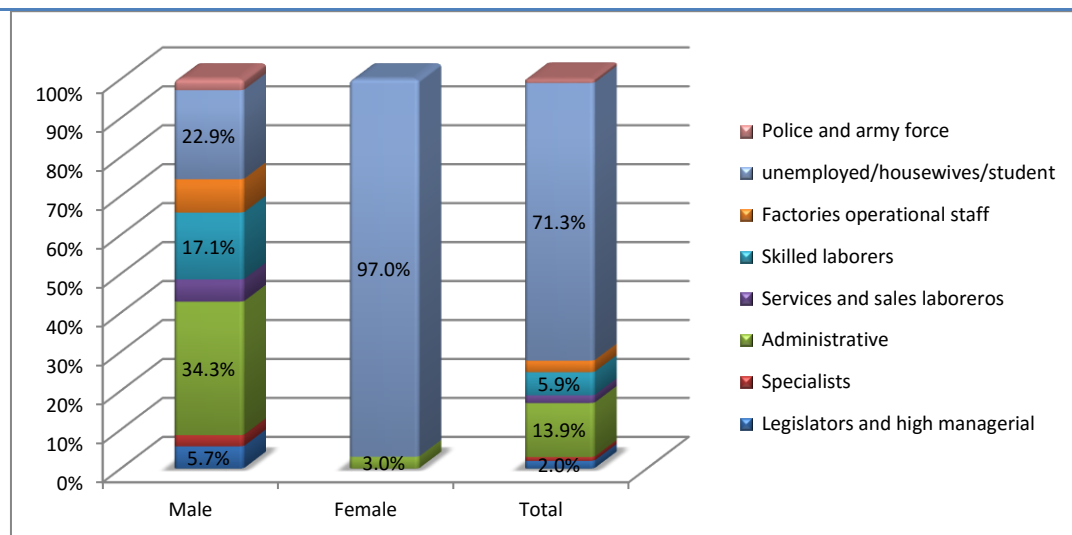
44.5% of the sample were at the age category 30-49 y. The younger groups represented about 21.8% of the total sample. 16.8% were at the age category 60+. This was an indicator of proper presentation of elder and young categories.



**Figure 8-3: % distribution of consulted households' sample by age category**

Source: sample interviewed during data collection of the SSESIA

With regard to the occupational status of the sample, about 97.0% of the female sample were unemployed. 34.3% of male sample consulted were working as administrative staff. 17.4% were working as skilled laborers. High legislators and managers represented 5.7% of male sample.



**Figure 8-4: % distribution of consulted households' sample by occupational status**

Source: sample interviewed during data collection of the SSESIA

### 8.2.1 Main results of consultation during the data collection phase

The majority of sample surveyed expressed very high demand on the project. They also indicated their willingness to be connected to the NG regardless to the amount of money they can afford to pay. 30.7% of them were willing to pay the installation cost in cash. This high level of enthusiasm from the local communities towards the project is attributed



to the high level of awareness of the benefits of the natural gas and the current hardships that the households are facing to secure LPG.

Following is a list of the main issues raised during data collection and scoping phase

**Table 8-2: Sample of the main issues raised during data collection and scoping phase in El Hadtha**

Subject	Questions and comments	Responses
<b>Role of the NGOs</b>	All community people will support the project, especially, the NGOs. They can be your main channel of information sharing. No need for big budget. Any engineer from the gas company can visit the NGO and make a presentation about the benefits of NG. This will cost EGAS nothing	Cooperation with the civil society will be discussed and it is always fruitful sharing information with the community.
<b>Community coherent</b>	In El Hadtha, the majority of people are affiliated to esteemed families who care for their reputation. All of them will work for the benefit of the project as they suffer from LPG problems. Two years ago, families were fighting to obtain an LPG. Yes, the problem declined now but it is always a concern not to find the LPG one day. The families can gather in meetings to receive any information about the NG. In case if the project faces any problem, head of families can solve the problems. Females can't attend public meetings but the NGOs can reach them with the help of the NGO promoters	This will be considered
<b>Brochures and leaflet</b>	Gas companies can provide information about the project through posters leaflets and brochures. Such advertisements should be put in public areas. They can be distributed in active NGOs	To be considered by EGAS care for all engagement activities
<b>Benefits of the NG</b>	In El Hadtha the LPG cost 10 EGP. In the past the LPG price was 4 EGP. It increased due to the greedy vendors attitudes. During Ramadan and the feasts the price might be doubled. NG is much cheaper than the LPG and the electricity on scale from 1 to 10 the NG is 10. It is extremely good. It is safe and of low cost	
<b>Complaints related to the LPG</b>	Sometimes the community complain about the LPG to the Supply Office goes in vain	
<b>Charity NGO role</b>	Mansour Amer charity NGO can provide additional support to poor people to install the NG. They provide 50 EGP to poor people in the area. They can provide similar amount to install the NG	



Subject	Questions and comments	Responses
<b>Role of community people</b>	Community people can mobilize each other to install the NG. Additionally, they can provide guidance to the illiterate groups	
<b>Cost of NG installation</b>	We know that the NG installation cost is high but the monthly consumption cost is low. However, the LPG cost us at least 30 EGP per month. The installation cost is about 1700 EGP. This is expensive but people can pay it in installment. The proposed monthly installment varies between 70-100 EGP (this is in consistent with the installment mechanism)	
<b>Safety of the NG</b>	When we talk about safety you might understand that there is low probability of explosions. This is not meant by safety in El Hadtha. They mean that the LPG vendors will not enter the houses. The LPG sellers are bullies and thieves. It is unsafe having them in the house	
<b>NG health benefits</b>	In El Hadtha, the illiteracy rate is high and people use a small stove that can explode easily. The installation of the NG will save their lives and secure them from accidents and burns. The women and young children carry the LPG cylinder up to their apartment, this might cause problems in the backbone. Having the NG installed will reduce such problem	
<b>Impact on vendors</b>	The project will have unfavorable impacts on LPG vendors.	

On the 10<sup>th</sup> of February 2016 a public consultation was conducted in Banha City to which all areas relevant for the project in Qalyubeya Governorate were invited. Governmental entities, environmental sector related units, NGOs and some members of the community attended the consultation event from El Hadtha area and Qaluob City. The results and documentation of the public consultation event can be found in the El Khosous City SSESIA.

### 8.3 Summary of Consultation Outcomes

The consulted stakeholders expressed their welcoming attitude of the project. They were keen to obtain information about the contracting procedures and technical requirements to have the NG installed. The majority of households pass across severely unfavorable aspects attributed to the LPG e.g. fluctuation of the LPG cylinder prices, inhuman treatment of the LPG distributors. Old people, poor people and women have the lion share of suffering as they have to assemble in queues to get one LPG. The cost of NG installation was a concern raised by the stakeholders. They were happy with the installment mechanism adopted by EGAS.





Site specific consultation activities, as mentioned in details above, included wide range of concerned stakeholders. This included but was not limited to, persons/households affected by the project activities, civil society organizations representing the interest of the community, or regulatory and governmental bodies who will play a role in facilitating or regulating the implementation of site-specific project activities.

While WB safeguards and regulations state that a minimum of two large-scale, well-publicized public consultation sessions are a must for projects classified as category ‘A’ projects like the one at hand<sup>20</sup>, additional consultation activities (for example through focus group discussions, in-depth meetings, and interviews) were implemented to reach the most vulnerable and difficult to reach community members. Additionally, in order to obtain larger scale and more quantifiable information, the consultant conducted surveys in the different sites.

#### **8.4 SSESIA disclosure**

---

The site specific ESIA, upon approval by the World Bank and EEAA, the final report will be disclosed on the WB website (infoshop), EGAS and Egypt Gas websites. An executive summary in Arabic will be disclosed in EGAS and Egypt Gas websites. A copy of Qalubia Site specific reports will be disclosed in EEAA and in Qalubia Governorate

---

<sup>20</sup> Clause 14 of OP 4.01 states that: “For Category A projects, the borrower consults these groups at least twice: (a) shortly after environmental screening and before the terms of reference for the EA are finalized; and (b) once a draft EA report is prepared. In addition, the borrower consults with such groups throughout project implementation as necessary to address EA-related issues that affect them.”



## Annex 1: Contributors to the ESIA

	Team Member	Role
1.	Dr. Tarek Genena	Senior ESIA expert and team leader (EcoConServ)
2.	Dr. Khaled Gamal	Senior ESIA expert and team leader (Petrosafe)
3.	Ms. Zainab Hafez	Senior SIA expert and project coordinator (EcoConServ)
4.	Dr Amr Sobhy	Senior EIA specialist (EcoConServ)
5.	Eng. Khaled El Sahy	Senior ESIA expert (Petrosafe)
6.	Eng. Fakhry Abd el Khalek	Senior EIA specialist (EcoConServ)
7.	Eng. Maysara Shams	EIA specialist (EcoConServ)
8.	Ms. Dalia Ashour	Senior SIA specialist (EcoConServ)
9.	Dr Nermin Eltouny	Senior EIA specialist (EcoConServ)
10.	Mr. Mohamed Hassan	Data analyst Expert (EcoConServ)
11.	Ms. Shaimaa Mostafa	SIA specialist (EcoConServ)
12.	Ms. Zeinab Aly	Data management manager
13.	Mr. Sohy El Grouf	Field manager
14.	Mr. Sameh Mahrous	Senior administrative coordinator (EcoConServ)
15.	Mr. Mohamed Abd El Hady	Community engagement manager
16.	Ms. Hana Mostafa	Field supervisor
17.	Team of surveyors	

### **Acknowledgement**

The EcoConServ and Petrosafe consultant teams would like to express their deep gratitude to the scores of support staff, drivers, NGOs, collaborators and organizations who logistically supported the completion of this project under tight time limitations.

EcoConServ and Petrosafe also acknowledge the invaluable knowledge and support provided by the technical, environmental, and social teams of EGAS and LDCs who accompanied the consultant teams.



## Annex 2: Procedures for chance finds and ESM&MP for physical cultural resources<sup>21</sup>

Cultural property include monuments, structures, works of art, or sites of significance points of view, and are defined as sites and structures having archaeological, paleontological, historical, architectural, religious, aesthetic, or other cultural significance. This includes cemeteries, graveyards and graves.

Antiquities Law 117/1983: Article 24 states that everyone who finds by chance the part or parts of a fixed monument in its place must promptly inform the nearest administrative authority within forty-eight hours.

Prior to the construction phase, the approval shall be obtained from the antiquities department and surveying department

### Chance Find Procedures

1. Stop the construction activities in the area of the chance find;
2. Delineate the discovered site or area;
3. Secure the site to prevent any damage or loss of removable objects. In cases of removable antiquities or sensitive remains, a night guard shall be present until the responsible local authorities and Ministry take over;
4. Notify the site manager and HSE supervisor who in turn will notify the responsible local authorities and the Antiquities Authority immediately (within 24 hours or less);
5. Responsible local authorities and the Antiquities Authority would be in charge of protecting and preserving the site before deciding on subsequent appropriate procedures;
6. Decisions on how to handle the finding shall be taken by the responsible authorities from the Antiquities Authority;
7. Construction work could resume only after permission is given from the responsible local authorities and the Antiquities Authority concerning safeguard of the heritage.

These procedures must be referred to as standard provisions in construction contracts, where applicable. During project supervision, the site manager and HSE supervisor shall monitor the above regulations relating to the treatment of any chance find encountered are observed.

Relevant findings will be recorded in Monitoring Reports and Implementation Completion Reports (ICRs) submitted to the World Bank.

---

<sup>21</sup> In the highly unlikely event that such finds are encountered in the project areas which are have been previously excavated for all underground utilities.



**Table 0-1: Management matrix for cultural sites (if encountered)**

Impact	Mitigation measures	Responsibility of mitigation	Responsibility of direct supervision	Means of supervision	Estimated Cost of mitigation / supervision
<b>Effects on cultural sites</b>	Identify areas of antiquities, monument repair zones	Contactor & Supreme Council for Antiquities and Local Council	LDC HSE	Review permitting procedures and ensure review of Council	LDC costs
	Supervise intensity and locations of construction activities	Expert from Supreme Council of Antiquities	LDC HSE	Review field reports + field supervision	Indicative cost to be revised and included in contractor bid \$715 / site for supervision and measurement of vibration for locations identified as “monument-critical”  LDC costs
	Control dewatering process	Contractor	Supreme Council Expert + LDC HSE	Field supervision	Indicative cost to be revised and included in contractor bid \$2,850 /site  LDC costs
	Reduce vibrations	Contractor	Supreme council Expert + LDC HSE	Contractual clauses + Field supervision	Indicative cost to be revised and included in contractor bid \$2,150/site  LDC costs
	Preserve architecturally valuable sites	Contractor	LDC HSE	Field supervision	Contractor costs (included in bid price) + LDC costs
	Preserve any found antiquity	Contractor + LDC HSE supervisor	LDC HSE	Field inspection throughout works and review field reports	Contractor costs (included in bid price) + LDC costs



**Table 0-2: Monitoring matrix for cultural sites (if encountered)**

Impact	Monitoring indicators	Responsibility of monitoring	Frequency of monitoring	Location of monitoring	Methods of monitoring	Estimated Cost of monitoring
Effects on monuments and vulnerable buildings	Vibration test results	LDC HSE	During construction near sites identified by the Council	Construction site	Calibrated vibration test meter	(\$750/meter + \$160 maintenance and calibration) x 11 vibration meters = \$10,000
	Investigate possible buried antiquities	LDC HSE + Supreme Council for Antiquities	Once before construction if required by the council	Streets and areas identified by the Council	Geophysical survey	Contractor costs (included in bid price) in areas designated as antiquities or monument repair zones (to be covered by LDC)



## Annex 3: Site air measurements Methodology

### Site selection

The selection of the site for the active air measurements is based on the prevailing wind direction, the future layout of the proposed project components.

### Collection of air measurement

#### *Instrumentation for measurements of ambient air pollutants*

Ambient air concentrations of sulfur dioxide were measured using an SO<sub>2</sub> analyzer (Thermo Scientific SO<sub>2</sub> Analyzer model 43i-USA) with a detection limit of  $\leq 1$  ppb and a precision of  $\leq 0.5\%$ . Nitrogen oxides were measured using a NO<sub>x</sub> analyzer (Thermo Scientific NO<sub>x</sub> Analyzer - Model 42i- USA) with a detection limit of  $\leq 0.4$  ppb and a precision of  $\leq 0.5\%$ . Carbon monoxide concentrations were measured using a CO Analyzer (Thermo Scientific Carbon Monoxide CO Analyzer model 48i-USA) with a detection limit of  $\leq 0.04$  ppm and a precision of  $\leq 0.5\%$ . Particulate matter, PM<sub>10</sub>, and total suspended particles, T.S.P, were measured using a Sequential Particulate sampler equipped with a Beta Ray Source. The detection limit is  $\leq 1.5 \mu\text{g}/\text{m}^3$  and the precision is  $\leq 0.4 \mu\text{g}/\text{m}^3$  for 24 hour cycle time at a 2.3 m<sup>3</sup>/h operating flow rate.

#### *Protocols for measurements of ambient air pollutants*

Concentrations of ambient pollutants were measured according to the standard reference methods presented in the table below.

**Table 0-3: Standard reference methods followed for the collection of ambient air pollutants**

Pollutant	Standard reference procedure
NO <sub>x</sub>	ISO 7996 equivalent to(U.S.A EPA Reference method – RFNA-1289-74)
SO <sub>2</sub>	ISO 10498 equivalent to( U.S.A EPA Reference method – EQSA-0486-60)
CO	ISO 4224 equivalent to U.S.A EPA Reference method – RFCA-0981-54)
PM <sub>10</sub> T.S.P	EPA method, Appendix J-Reference method FR





## Annex 4: Impact Assessment

The impact of each activity on each receptor was assessed according to magnitude on a scale of -10 to 10, where negative values indicate a negative influence on the receptor, and importance on a scale of 0 to 10, which encompasses the probability of occurrence, frequency of the impact etc. The numbering system is used as a relative measure, where more negative numbers correspond to impacts having a higher negative magnitude. Susceptible receptors and corresponding activity are deduced and addressed if both magnitude and importance are of minor severity.

Further, the Buroz Relevant Integrated Criteria and is used to determine the total importance, I, of the impact for each activity on all receptors and of the project overall.

On the basis of the value of the importance of impact, I, obtained, the severity of the impact of an activity is assessed.

Criterion	Definition	Scoring Scale
Intensity (IN)	Degree of destruction of activity on receptor	1 (lowest)-12 (highest)
Extension (EX)	Theoretical area of influence of the impact	1 (localized) – 8 (widespread)
Momentum (MO)	Period of time for manifestation of the impact	4 (immediate: <1 year) – 2 (medium: 1-5 years)- 1 (long term: > 5 years)
Persistence (PE)	Duration of the effect of the impact	1 (fleeting, < 1 year), 2 (temporary, 1-5 years), 4 (permanent, >5 years)
Reversibility (RV)	Possibility of returning to pre-activity initial conditions by rebuilding or natural means	1 (short term, < 1 year)- 2 (medium term, 1-5 years) – 4 ( long term, > 5 years or irreversible)
Recoverability (MC)	Possibility of reconstruction with corrective measures	1 -2 (full and immediate recovery)- 4 (partial recovery and medium term)- 8 (unrecoverable)
Synergy (SI)	Reinforcement ability of manifested effects	1(No synergy of actions on a receptor) -2 (moderate synergism)-4 (high synergy)
Accumulation (Ac)	Progressive increase of the effect	1 (no cumulative effect)-4(cumulative effect)
Effect (EF)	Directionality of impact-the cause (action)-effect (impact)	4 (direct)- 1 (indirect)
Frequency (PR)	Regularity of manifestation of the effect	4 (continuous) – 2 (irregular)-1 (periodic)





Site-specific ESIA NG Connection 1.5 Million HHs-Qalyubeya Governorate/ El Hadtha - August 2016

PROJECT PHASES																			
MOBILIZATION			PREPARATION					CONSTRUCTION							OPERATION				
Transport of equipment	Transport of machinery	Temporary storage	Area delination & fencing	Receiving equipment & materials (unloading)	Storage of equipment & materials	Temporary infrastructure	Waste generation	Excavation: low pressure residential connections	Pipe laying: low pressure- residential	Backfilling and road repair- street restoration	Reception & storage of equipment and materials	Waste Generation	Leakage testing: hydrostatic	Leakage testing: pneumatic	Gas network	Appliance conversion	Leakage (residential)	Waste generation	
-	-	-	-	-	-	-	-	-	-	-	-	-	-	-	-	-	-	-	-
5	5	1	1	1	2	2	1	5	6	2	2	6	2	2	8	1	8	3	
4	4	2	1	1	1	1	1	1	1	1	1	1	2	2	4	1	4	1	
4	4	4	4	4	4	4	4	4	4	4	4	4	4	4	4	1	4	4	
1	1	1	1	1	1	1	1	4	4	4	4	4	1	1	1	1	1	1	
1	1	1	1	1	1	1	1	4	4	4	4	4	1	1	1	1	1	1	
4	4	1	1	4	4	1	4	1	1	1	1	4	1	1	2	1	1	1	
1	1	1	1	1	1	1	4	1	1	1	1	4	1	1	1	1	1	1	
4	4	1	4	4	4	4	4	4	4	4	4	4	4	4	4	1	4	4	
1	1	1	1	1	4	4	4	4	4	4	1	4	1	1	1	1	1	1	
1	1	1	1	1	1	1	1	4	5	1	1	1	1	1	1	1	1	1	
<b>40</b>	<b>40</b>	<b>18</b>	<b>19</b>	<b>22</b>	<b>28</b>	<b>25</b>	<b>28</b>	<b>43</b>	<b>47</b>	<b>31</b>	<b>28</b>	<b>49</b>	<b>24</b>	<b>24</b>	<b>47</b>	<b>13</b>	<b>46</b>	<b>25</b>	
<b>32.7</b>			<b>24.4</b>					<b>35.1</b>							<b>32.8</b>				
<b>31.2</b>																			

None/ Irrelevant	0	25
Minor severity	26	50
Medium severity	51	75
Major severity	76	300



**Annex 5: Complaint Form**

Local Distribution Company:-----	
<b>English Complaint Form</b>	
Date:---/---/-----	Time: ---:---
<b>Aggrieved person information</b>	
Name of the customer:----- ID Number:----- ---	
Address:----- ----- -----	
CRN:-----	
Name of aggrieved person:-----	
Relation to the customer:-----	
Cell phone:-----	
Summary of the complaint: ----- ----- ----- ----- -----	
Name of aggrieved person -----	Signature -----
<b>Complaint recipient</b>	
Name of the person received the complaint-----	Signature:-----
The entity caused the complaint-----	Zone:-----
Analysis of complaint reason: ----- ----- ----- ----- -----	
Proposed corrective procedures: ----- ----- -----	



-----  
-----  
-----  
**Person responsible of the corrective procedures:----- Signature:-----**  
---

شركة.....

شكوى عميل

التاريخ :- /...../..... الوقت :- :.....

بيانات الشاكي

اسم العميل : ..... رقم قومي .....  
العنوان :- :..... CRN .....  
اسم مقدم الشكوي : ..... صفة :..... تليفون :.....

ملخص الشكوى :

.....  
.....  
.....

مقدم الشكوي  
الاسم :..... التوقيع :

بيانات متلقي الشكوي

اسم متلقى الشكوى : ..... التوقيع :.....  
الجهة المشكوى منها : ..... المنطقة :.....  
تحليل أسباب الشكوى :

.....  
.....  
.....

الاجراءات التصحيحية :

.....  
.....  
.....

اسم متخذ الاجراء التصحيحي : ..... التوقيع :.....

**Annex 6: Egypt Gas Health and Safety guidelines**



The H&S practices of the Gas Distribution industry in Egypt follows International standards and the National labor law and its relevant decrees.

Egypt Gas, as one of the LDCs working in the project has taken the initiative to prepare H&S guidelines (kindly see below) that are generally followed by other LDCs. This is a comprehensive document in Arabic which covers environmental, health, and safety aspects of most project activities with clear instructions, administrative requirements, and illustrations.

Attached below is the 3<sup>rd</sup> version of the Egypt Gas H&S guideline. This version, currently under revision by Egypt Gas, in addition to actions proposed in the ESIA generally meet relevant WBG EHS guidelines. However, Egypt Gas and EGAS will seek to further align the guideline with WBG EHS guidelines during this revision.